



THE DROVES
SOLAR FARM

The Droves Solar Farm

EIA Scoping Report Appendices - Appendix 8

Date: November 2024

PINS Reference: EN0110013



THE DROVES
SOLAR FARM

Appendix 8.1

Gazetteer of NHLE Assets

1 Appendix 8.1: Gazetteer of NHLE Assets

1.1 Introduction

1.1.1 The following table provides details of designated heritage assets recorded on the Historic England National Heritage List for England within 2km or 5km of the study site. Their locations are marked on Figure 8-1.

Ref.	Name	Description	NGR	Designation	Period
Scheduled Monuments within 5km					
1015270	Churchyard cross, St George's Church	The monument includes the lower part of a medieval churchyard cross situated in the churchyard of St George's Church, South Acre, c.20m south of the church and c.5m north west of the churchyard gate. The cross, which is also Listed Grade II and is thought to be of 14th or 15th century date, is of limestone and is constructed in two parts. At the base is a rectangular socket stone measuring c.0.74m east-west by c.0.78m north-south with spurs at the upper angles, and this is hollowed on the upper surface to a depth of c.3cm. The lower part of the shaft of the cross, which is cemented into the centre of the hollow, tapers slightly and is octagonal in cross section, with alternate straight and hollow chamfering and crocket stops above a square foot. The upper part of the shaft and head are missing. The socket stone is partly buried and stands c.0.3m above the present ground surface, and the shaft rises	TF 14342 81004	Scheduled Monument	Medieval

		to a height of c.0.85m above this, the overall height being c.1.15m.			
1019836	Remains of St Andrew's Church	The monument includes the standing ruins and buried remains of St Andrew's Church, situated approximately 80m north of the parish church of St Mary. The standing ruins represent the greater part of the nave of the church, with the buried remains of a demolished aisle to the south of it and of the chancel to the east. Also included is the socket stone of a medieval standing cross which has been placed in the west doorway of the nave. Both the socket stone and remains of St Andrew's Church are Listed Grade II. St Andrew's Church is considered to date originally from the early 12th century and lay within a manor which, from about 1196 until the Dissolution of the Monasteries was held by West Dereham Abbey. It was known subsequently as Abbots manor, the site of the manor house being on or close to that now occupied by Abbey Farm, about 15m to the north. According to a late 16th century survey, the neighbouring St Mary's Church lay on the far side of the manorial boundary, adjacent to the site of another manor held originally by West Acre priory. From at least the 13th century the two churches went together as a single rectory whose revenue went to West Acre priory. St Andrew's presumably had the status of a parochial chapel. A survey of 1593 refers to 'the land that was formerly the churchyard of St Andrew's', it is likely that it went out of use as a church around the time of the Reformation, although part remained intact and is described in a	TF 74287 16196	Scheduled Monument	Medieval

		lease of 1803 as being in use as a millhouse. By 1845 it was a ruin.			
1003160	Hangour Hill	No Description	TF 08698	75218	Scheduled Monument Bronze Age
1015269	Double moated site of Old Hall, 250m north west of Church Farm	The monument includes, two adjacent but distinct moated enclosures which are believed to be the site of South Acre manor, located on the south side of the River Nar, c.250m north east of St George's Parish Church. On the opposite side of the river lies the precinct of Castle Acre priory, which is the subject of a separate scheduling (SM 21416). Both the moated sites contain the visible remains of substantial masonry structures, including buildings, and in the area between them are the buried remains of another building, also included in the scheduling.	TF 14586	81185	Scheduled Monument Medieval
1004035	Camphill	No Description	TF 13087	75141	Scheduled Monument Unknown
1019333	Remains of medieval and early post-medieval settlement at Summer End	The monument includes earthworks and buried remains of part of a medieval and early post-medieval settlement bordering the northern edge of the common at Summer End, towards the southern end of East Walton parish. The common is one of two surviving fragments of a much larger common which, before the enclosures of the second quarter of the 19th century, extended from the road to East Winch, over 2km to the north west, to Pentney Common at the southern end. The earthworks present the characteristic appearance of a group of adjacent tofts (homestead enclosures)	TF 15407	74945	Scheduled Monument Medieval

		and associated yards, gardens and paddocks, the boundaries of which are marked by partly infilled, intersecting ditches visible as shallow, linear depressions between 0.25m and 0.5m deep and up to 6m wide. Another part of the settlement which survives lies about a kilometre to the north west and is the subject of a separate scheduling.				
1019668	Moated site 230m and 110m north of All Saints Church	The monument includes a double moated site and associated ditched enclosures in two separate areas of protection to either side of the modern course of the River Nar. The former course of the river, which is recorded on an 18th century map, can be seen as a slightly sinuous depression up to 12m wide curving around the north and west sides of the moated site. On the north west side of the old river course the ground rises in a steep scarp about 2m high.	TF 15726	83016	Scheduled Monument	Medieval
1015870	Castle Acre Priory	Castle Acre priory is located to the south west of the village of Castle Acre and alongside the River Nar, which flows along the southern boundary of the monastic precinct. The monument includes the standing and buried remains of monastic buildings and various associated earthworks within a precinct which is defined on the north east, east and south east sides by the remains of a medieval boundary wall. The priory is thought to have been founded in or around 1089 by William de Warenne, first Earl of Surrey, as a daughter house of the Cluniac priory of Lewes, which he had also founded and which was the first house of the order to be established in England. It was, however, his son, the second earl, who confirmed the foundation	TF 14827	81446	Scheduled Monument	Medieval

		<p>charter. The church and cloister were consecrated by the bishop of Norwich some time between 1146 and 1148. The house was comparatively well endowed, and in the taxation roll of 1291, the clear annual value of the priory holdings was assessed at 215 pounds 14 shillings and 4 pence, although it was recorded two years later as being in debt to the sum of over 666 pounds. The annual value in 1535 was given as 306 pounds, 11 shillings and 4 pence. In the record of a visitation c.1390 the full complement of monks was stated to be 26, although in the previous century the number had sometimes exceeded 30. The priory was dissolved in 1537 and granted by the Crown to Thomas Howard, Duke of Norfolk. It then passed successively to Thomas Gresham and Thomas Cecil, later Earl of Exeter, whose son, William, sold it to Sir Edward Coke. Part of the monastic building remained in use as a farmhouse.</p>			
1002894	Deserted medieval village, Great Palgrave	No Description	TF 83173 12251	Scheduled Monument	Medieval
1003973	Devil's Dyke, Beechamwell and Barton Bendish. Section 1km in length West of Smeeth Wood	No Description	TF7451708184	Scheduled Monument	Roman or Early Saxon

1017909	Castle Acre Castle, town defences and Bailey Gate	The monument includes the earthworks and other structural remains of Castle Acre Castle, the remains of the defensive works which enclosed the area of the Norman town to the west of the castle, and the gatehouse which guarded the northern entry to the town. These features are located in the southern part of the modern village of Castle Acre, on the northern slope of the valley of the River Nar, above the point where the river is crossed by the Peddars Way.	TF 81823 14922	Scheduled Monument	Medieval
1008352	West Acre Priory, and square barrow within the precinct	The Priory of St Mary and All Saints, West Acre, is situated immediately to the south of the parish church of All Saints in West Acre village, in the valley of the River Nar. The monument comprises a single area containing the monastic precinct, which extends to north and south of the river and is enclosed by the remains of a boundary wall. Within the precinct are the upstanding and earthwork remains of monastic buildings and a variety of associated features. In the south eastern part, and included in the scheduling, is a square barrow of much earlier, prehistoric date. West Acre Priory was founded as a house of Augustinian Canons around or before 1135 by the Lord of the Manor, Ralph de Toni and his family. The priory was comparatively large and wealthy, with up to 26 canons, although from the later 14th century onward, the recorded numbers never exceeded 20. The original endowment, which included the manor and church of West Acre, was augmented by further gifts during the 13th century, and in 1291 the community is listed as having an annual income of 140 pounds 5s 7d. In the	TF 78205 14994	Scheduled Monument	Medieval

		first half of the 15th century, the income is recorded as 256 pounds 11s. The priory, with its dependent cell of Great Massingham was dissolved in 1538, and the site, with the manor of West Acre, was granted by Henry VIII to Mary, Duchess of Richmond and Somerset for life.			
1019334	Medieval settlement remains east of Walton Common	The monument, which is in two separate areas of protection, includes earthworks and buried remains of part of a medieval and early post-medieval settlement situated to the south of the road to East Winch, between the former edge of Walton Common on the west side, and the road now known as Church Lane on the east. Church Lane was at one time the main road through the village and continued south to join what is now the A47 and, prior to enclosures in the second quarter of the 19th century, Walton Common was much more extensive and ran south and south eastwards to join Pentney Common. The ruins of a medieval church associated with the settlement can be seen to the south of the monument, in the garden of Abbey Farm, and these and the remains of another area of settlement which survive at Summer End, about a kilometre to the south east, are the subject of separate schedulings.	TF 74244 16478	Scheduled Monument	Medieval
Grade I Listed Buildings within 5km					
1077266	CHURCH OF ALL SAINTS	Parish church. C11 and later. Flint with limestone, carstone and ferruginous conglomerate dressings. Pantile and wood shingle roofs. Aisleless nave; narrower axial tower; chancel. C14 3-light west	TF8307115504	Grade I	Medieval

		<p>window with reticulated tracery. Blocked doorway beneath. C14 plain chamfered north doorway blocked. C14 south doorway of 2 plain chamfered orders with a hood mould. Pair of blocked C11 loops with carstone arched lintels opposed towards the middle of the nave to north and south. 2 C15 2-light south windows with flat heads and ogee tracery. C11 tower with evidence for an added south transept now removed. Blocked archway with lancet to ground floor. Sloping dripstone to former transept roof. Reduced double splayed window at first floor. Heavily restored twin bell-openings with triangular heads and mid wall piers of flint and mortar to west and north, and carstone shafts to south and east. Throughstone slab to west. South and east openings have cubic capitals with chamfered-off angles, pronounced astragals and simple conical bases. Pyramidal shingle roof. Chancel with C14 2-light east window with soufflet and a C14 cusped lancet to north. Piece of limestone re-used in north wall - possibly a former arched window jamb with drilled holes for a wooden lattice. Interior. Eastern tower arch original with a roughly semicircular headed arch on chamfered imposts and sloping jambs. C14 double-ogee moulded western tower arch with an original triangular headed doorway above. Surviving rood stair in north west angle of tower. Chancel with a simple broken piscina on east wall and a C14 aumbry to north.</p>			
1077660	PRIORY GATEHOUSE	<p>Gatehouse. C14. North entrance to outer court of Priory of St. Mary and All Saints, founded c.1100 by de Toni family. Later adopted Augustinian rule. Dissolved</p>	TF7804815231	Grade I	Medieval

		<p>1538, one of the first of the greater houses to surrender. Flint with stone dressings, roofless. 2 storeys. North side has 2 centred double hollow chamfered arch set on chamfered jambs. 3 shields with coats of arms above, legible in C18 as de Toni and Beauchamp, Earls of Warwick, further Beauchamp coat. First floor with single chamfered lancet. Springing of gable. South-east angle buttress with set offs. Interior of arch has angle shafts supporting quadripartite stone rib vaults with brick infilling. South face has 2 2-centred arches within one embrasure, a further outer former north springing of second inner vault. Clunch and brick courses above. Scheduled Ancient Monument, County Number 170. See F.H. Fairweather and H.L. Bradfer-Lawrence 'The Priory .. Westacre' Norfolk Archaeology XXIII, 1929, pp.359-394 (ref. p. 373).</p>			
1077667	CHURCH OF ST MARY	<p>EAST WALTON - TF 71 NW 6/6 Church of St. Mary 15-8-60 Parish church. C12 and C15. Mainly flint with some carstone, limestone and brick; stone dressings; concrete pantile roof. Round west tower, nave, chancel, south porch. C12 tower of uncoursed small flints with variety of other materials, rendered embattled parapet having string course with gargoyles. West window a small lancet; semi-circular headed window above part blocked; bell opening of 2 uncusped pointed lights under a 4-centred arch with hoodmould. North and south nave alike: carstone at base, string course with broken flint above, diagonal buttress to west, 3 plain buttresses. 3 Perpendicular openings of 3 ogee headed lights, tracery of two</p>	TF 74267 16112	Grade I	Medieval

		<p>mouchettes above outer lights, super transom and mullion above central light; opposing doorways with continuous moulding and hood mould. South porch of broken flint with diagonal buttresses, round shafts with polygonal impost, moulded arch above with continuous outer moulding; stone benches, returns with 2-light openings with panel tracery, that to east lost; remains of arch to stoup recess to right. Chancel with green slate roof, gable parapet and cross, rendered flint walls, 5-light Perpendicular east window with stepped lights under 4-centred arch; south chancel with basket headed priest's door renewed; two Perpendicular openings of 2 and 3-lights. North chancel with one 2-light Perpendicular opening. Interior: Nave roof ceiled, 9 stone corbels in form of heads for wall posts of earlier roof. Tall chancel arch part blocked, polygonal jambs, arch to east and west with moulding of deeply carved foliage; C18 chancel arch in wood with semi-circular head and reeded jambs. Chancel: renewed crown post roof; rear arches of east and south windows with moulded heads, that to east having figure and foliage stops; dropped rear arch to south window; recess with shelf; triangular stone pediment over priest's door with Tudor rose in hexafoil, traceried spandrels. 4 C18 Tournai marble heraldic ledger slabs to "The Honble.</p>			
1077681	BAILEY GATE	<p>Bailey Gate. C13. Rubble flint, stone dressings. Rectangular on plan with inner and outer arches, 2 round towers to north. North arch of unmoulded stone blocks, jambs dying into wall. Interior rere, arch. South side has 2 unmoulded stone block arches with interior</p>	TF8172815150	Grade I	Medieval

		rere'arch, supported by quoined piers. Grooves for portcullis, hinges of later, no longer extant doors. Forms north gate of C13 west extension of fortifications of Castle Acre Castle (q.v.). Scheduled Ancient-Monument County Number 140.			
1169691	CHURCH OF ST MARY	GV I Church. C12, with C14, C15, C18, C19 and C20 alterations and additions.	TF 76445 13779	Grade I	Medieval
1169820	CHURCH OF ST MARY	Parish church. Medieval and later. Flint with ashlar and some brick dressings. West tower; Aisled nave; chancel flanked by extension of north aisle. C13/C14 west tower with angle buttresses and a rectangular stair projection to south east. C13 west door with 3 pairs of shafts supporting deeply cut mouldings. Niche above with foiled arch beneath a triangular hood mould with carved head label stops. Roof line pertaining to a former west porch. Plain lancet to south. 2-light cusped Y-traceried west window at first floor. Fine 2-light cusped Y-traceried bell openings. Crenellated parapet with blind tracery and corner finals. North aisle with blocked C13 north door on a pair of shafts now missing and within a rectangular hood mould forming spandrels. Late-Medieval 3-light west window. 2 3-light Perpendicular windows in angular style, one reset C14 3-light reticulated window (probably in the position of a former chapel) and 3 3-light C19 windows in imitation of angular Perpendicular windows. South with 4 3-light angular Perpendicular windows and one C14 wave-moulded doorway of 2 orders. 10 late-Medieval 2-light clearstorey windows. C13 chancel with a rebuilt south wall incorporating a priest's	TF 84997 11462	Grade I	Medieval

			<p>doorway and 3-light window without tracery. Very unusual C13 east window consisting of 3 lancets with an octofoil above, the whole within a moulded containing arch. Interior. Tower arch of 2 plain chamfered orders without responds. Damaged C14 stoup in south respond with broken tracery. 4-bay early C14 arcades of quatrefoil piers with intermediate fillets supporting plain chamfered arches of 2 orders. Easternmost bay lower and divided from main arcade. by an area of blank wall suggesting a former transeptal arrangement. Double-ogee and plain chamfered chancel arch on semi- circular responds. Chancel with 2-bay north arcade of rebuilt quatrefoil pier with responds supporting hollow chamfered arches. East window with moulded scoinson arch flanked by 2 small C13 niches with blind quatrefoils. Nave has a restored C15. arch braced roof with short king posts onto collars. Former rood stair to south now leads to a projecting C19 pulpit in Decorated style.</p>			
1171437	<p>REMAINS OF GATEHOUSE OF CLUNIAN BENEICTINE PRIORY OF MARY AND PETER AND PAUL</p>	<p>OF OF ST ST ST</p>	<p>Gatehouse to north precinct of Cluniac Benedictine Priory of St. Mary and SS Peter and Paul, founded 1090, dissolved 1537. c.1500. Knapped, squared flint, clunch blocks, brick dress. Roofless. 2 storeys. Perpendicular. North face has off-centre 4-centred arch carriage entrance, brick rustication, jambs and soffit, drip mould, keyed brick arch above. 2 centred arched pedestrian gate, similar brick details. Royal arms of England above. 2 outer brick dressed drip mould head rectangular windows. Angle buttresses with set offs, brick dressings. First floor string course, 4 panels with coats of arms. Sills and jambs only of 2</p>	TF8136314941	Grade I	Medieval

			first floor windows. West face has one ground and one first floor brick dressed rectangular window. South face has 2 arches, one ground and 2 first floor windows. Angle buttresses. Brick spiral staircase in south-west corner, remains of flues. Scheduled Ancient Monument, County Number 2. See F.J.E. Raby and P.K.B. Reynolds Castle Acre Priory (1952). In care of HBMC.			
1171480	CASTLE CASTLE	ACRE	Castle containing earlier unfortified house. C11 house converted into keep mid C12, outer ward c.1200 and C13. Flint and clunch rubble, some stone dressings. Roofless. Built by the first de Warrene Earls of Surrey (obit 1087) father of founder of Castle Acre Priory (q.v.), extinct in heirs male 1147. Abandoned in C14. Post-Conquest country house or domus defensabilis possibly a two-storey hall, converted into rectangular keep early to mid C12 excavated 1972-1977. Curtain wall in place of former wooden palisade, clasping buttress piers survive on exterior west and north side. Lower wall fortified c.1200, with surviving sections of wall at east and south. To west base of south abutment of gateway of C13, possibly contemporary with north Bailey Gate (q.v.) of Castle Acre. Formerly thought to be a motte and bailey castle of one build of late C11. Scheduled Ancient monument County Number 140. See J.G. Coad and A.D.F. Streeten "Excavations at Castle Acre, Castle Acre, Norfolk 1972-1977 : Country house and castle of the Norman Earls of Surrey" Archaeo- logical Journal CXXXIX (1982), pp. 138-301. In care of HBMC.	TF8188515170	Grade I	Medieval

1269570	Swaffham Market Cross	Market Cross, also known as the Butter Cross, built in 1781-1783 for George Walpole, the third Earl of Orford, probably to a design by James Wyatt, with restorations of 1873, 1904, 1984 and 2018.	TF8195908910	Grade I	Post-Medieval
1269628	CHURCH OF ST PETER AND ST PAUL	Parish church. C14-C15 with C18 and C19 alterations and restorations. Flint, Barnack stone and some brick. Lead roofs. PLAN: west tower, nave, aisles, north and south transepts and chancel.	TF 82088 08999	Grade I	Medieval
1305453	HIGH HOUSE	Country house. Mid-C18, visited by Mrs Lybbe Powys in 1756. Refaced at south with internal alterations by W.J. Donthorn, architect, c.1829 for Anthony Hamond, the outcome of ambitious Greek Revival schemes to re-face the whole house from 1823. High quality Holkham estate gault brick, stucco dressings, pantiled roofs. Greek Revival centre, Palladian north ranges. 2 storey south front arranged as basement with piano nobile, 3 storey lateral north wings. U plan centre has 5 central bays, single bay returned wings, possibly on site of C17 manor house on the Spelman family.	TF 79284 18126	Grade I	Post-Medieval
1306357	CHURCH OF ST GEORGE	Parish church. Medieval and later. Flint with ashlar and some brick dressings. Pantile roofs. West tower; nave with north aisle and north porch; chancel with continuation of north aisle forming a funerary chapel.	TF 80999 14318	Grade I	Medieval
1306406	CHURCH OF ALL SAINTS	Parish church. Medieval and later. Flint with ashlar and some brick dressings. Slate roofs. Tower at western end of south aisle; aisled nave; chancel. West wall of nave was formerly flush with the west wall of the tower.	TF 74654 12962	Grade I	Medieval

		<p>C13/C14 tower with one diagonal buttress, one south facing buttress to south east angle and one facing-north at north west angle. Lancet window to ground floor, single quatrefoils at first floor to east and south and a flat headed loop to west. Carved gargoyle at former join with nave roof. 3 original 2- light Y-traceried bell-openings and one 3-light panel-traceried replacement to east. Crenellated parapet. Vestry, dated 1906, to north of tower. C12 semicircular headed blocked north nave door partially obscured by a lean-to boiler house. North aisle with a blocked late-Medieval doorway and 4 2-light and one 3-light C19 traceried windows in Perpendicular style. Taller eastern-most bay (heightened to accommodate organ). C14 east window of 3 lights with a complex reticulated motif. South aisle with 4 3-light C19 traceried windows in Perpendicular style. The flat heads appear to retain their original hood- moulds with carved head label stops. The east window has a segmental head also with original hood mould and stops. 2 arched tomb recesses on south wall. C19 south porch. Late C13/C14 south doorway with carved decoration to head. 8 2-light clearstorey windows with flat heads and tracery. Chancel with 2 3-light panel traceried windows and a moulded priest's doorway to south. Fine 5-light panel traceried east window. One 3-light window to north with diagonally set marble plaque below in memory of Sarah Tyssen of Narborough Hall (died 1814). Interior. Hollow-chamfered tower arch of 2 orders and no responds. C14 3-bay north arcade of quatrefoil piers with filleted</p>			
--	--	---	--	--	--

		inter- mediate rolls and facetted capitals/bases. Wave-moulded arches of 2 orders. No chancel arch. South arcade probably C15 of 4 bays on octagonal piers with every other facet of each pier concave (except for westernmost pier and respond).			
1342386	CHURCH OF ST JAMES	Parish Church. Largely C14 and C15, with some c.1300 details, restored by Ewan Christian, architect. Rubble flint with squared knapped flint and cut stone dressings, leaded aisle, green slate nave and chancel roofs.	TF 81598 15022	Grade I	Medieval
1342389	REMAINS OF CLUNIAN BENEICTINE PRIORY OF ST MARY AND ST PETER AND ST PAUL	Remains of Cluniac Benedictine Priory of St. Mary and SS Peter and Paul. C12 church and monastery, C15 and C16 alterations and additions in west range forming Prior's Lodging. Founded 1090 by William de Warrene, second Earl of Surrey, dissolved 1537. Benedictines of the Cluniac Reform.	TF8139714810	Grade I	Medieval
1342409	CHURCH OF ALL SAINTS	Parish Church. C14, C15, C17 and C19 restorations. Formerly a dependancy of West Acre Priory, restored by Sir Edward Barkham, Lord of the Manor from C 1600 and Lord Mayor of London 1621, c.1638. An example of a Gothic survival or early Gothic Revival restoration. Knapped flint with ashlar dressings, slate roofs. 3 stage west tower has one 2-light 'Y' tracery C17 west window with drip mould head and flush keyed -arch above. Second stage has 4 rectangular lancet slits, Barkham coat of arms with cartouche on west face. Bell stage has 4 C17 pointed traceryless windows. Stone plinth, 2 ashlar faced west angle	TF 78080 15237	Grade I	Medieval

		<p>buttresses with set offs, bell stage string course, ashlar battle- ment parapets. Clock, 1907 with letters of Christ's Command "Watch and Pray" in place of numerals. 3 bay battlemented nave has 2 north and 2 south 4-light windows with distinctive C17 Gothic tracery of Perpendicular inspiration under drip mould heads and flush keyed keystone arches. South side has 4 and north 3 ashlar set off buttresses. Ashlar parapet with coat of arms on south. North porch has C17 classical doorcase with chamfered jambs. Capitals and moulded arch with central keystone with dears head. Flush keyed arch above. Porch interior has re-set C13 stone stead voussoir figure. South nave door has simple classical arched embrasure with keystone head under drip mould. Inscription EW 1538, presumably for 1638, above. 2 bay chancel south side has 2 'Y' tracery cusped light windows set under C17 round arch heads. South priest's door, 2 simple classical arches with keystone and drip mould, inscription above 1638 IFC. Battlemented parapet with coat of arms, one set off angle buttress. 4-light east window, tracery perhaps of c.1900 of Perpendicular inspiration, gable north transept vestry with 3-light Perpendicular style tracery, battlements and set off buttresses. Interior: C14 chancel arch, perhaps c.1638 re-cut capitals. Splayed stone soffits to nave windows dying into embrasure. Primitive tower arch perhaps c.1638 with stop angles and crude chamferings.</p>				
1342411	HIGH STABLE AND HOUSE COURT CURTAIN	<p>Stable court and curtain wall attached to east of High House (q.v.). C.1829 by W.J. Donthorn, architect, for Anthony Hamond. Holkham gault brick facades of high</p>	TF 18152	79346	Grade I	Modern

	<p>WALL ATTACHED AT EAST OF HIGH HOUSE</p>	<p>quality detail, red brick interior to court, slated roofs. Rectangular single storey court with 4 2-storey flat roofed angle towers, screen wall to west connecting with High House. Highly abstract Greek Revival style with primitivist Soanic references. Tripartite east range has central rubbed brick arched barrel vaulted carriage entrance. Projecting wooden cornice and pediment with central rubbed brick arch oculus. Slightly recessed wings continue the eaves level string course and parapet. South front has Soanic porch with 2 central and 2 angle Greek Doric antae, entablature, 2 projecting cornices, attic with round headed finials. Antae repeated in interior of porch. Projecting bay on north side with slit windows. Each angle has 2 storey towers, at south-east grooms' dormitory, at south-west Norman servants', forth-west brewery, north-east hay loft. Ground floor has recessed centre with 3 windows divided by brick antae supporting frieze and entablature on same line as that of lateral,ranges. First floor has single narrow pilastered opening. Slightly projecting angle antae have upper level slit with orthodox position above of capital omitted. Stucco cornice, frieze and projecting wooden eaves, broken forward over angles, recessed in centre. Flat roofs. See Catalogue of the Drawings Collection of the Royal Institute of British Architects C-F (1972) pp.83-89 R. O'Donnell "W,J. Donthorn (1799-1859) : Architecture with great hardness and decision in the edges" Archaeological History (JSAH GB) xxi, (1978) pp. 83-94.</p>			
--	--	--	--	--	--

1342499	CHURCH OF ST MARAGRET	<p>Parish church. Medieval and later. Flint, partly rendered, with ashlar dressings. Black pantile and slate roofs. West tower, nave with north aisle and south porch and chancel. Perpendicular tower with diagonal western buttresses and flat stair turret projection to south. Moulded west doorway with carved head label stops. 3-light Perpendicular window above, quatrefoil soundholes, 2-light cusped bell-openings and a plain parapet. C13 south door with dying arch mouldings and one order of colonnettes with bell capitals, crowned head label stops and female head in quatrefoil above doorway. 3 C13 lancets to south wall of nave and chancel, one 2-light Perpendicular window with embattled transom and similar Victorian replica. 3 partially restored 2-light curvilinear C14 north aisle windows with one double lancet to west and a triple lancet (probably re-set) to east. North aisle formerly ran alongside chancel leaving 2 blocked arches and a simple piscina. Victorian Geometric east window. C13 3-bay nave arcade and former 3-bay chancel arcade now reduced to one bay. Fine quadrilobe piers with bell capitals and arches of 2 hollow chamfered orders. Carved corbel of human head with horns flanked by foliage forms westernmost chancel arcade support. Chancel arch does not survive. C15 tower arch with faceted responds and capitals. Simple nave piscina and a C13 angle piscina-cum-sedilia in chancel with a bell capital on colonnette and a shaped arm rest. Remains of Medieval decorative paintwork on arches of 2 blocked</p>	TF8635412973	Grade I	Medieval
---------	-----------------------	--	--------------	---------	----------

		bays of chancel north arcade. Group value with Old Rectory.			
1342564	NARFORD HALL	Mansion. Built by Andrew Fountaine of Salle, Norfolk (1632-1706) from 1690 to c.1704. Greatly enlarged from c. 1830 under the direction of Andrew Fountaine. Carstone with ashlar dressings and slate roofs. Original block to south west. Mainly 2 storeys with attics. 7-bay facade to original block of sash windows with glazing bars (presumably C18 replacements) surrounded by stone eared architraves. Pedimented, slightly advanced and ashlar faced central 3 bays. Former entrance aedicule consists of open-topped segmental pediment on a pair of columns with carved capitals. Fanlight with radiating glazing bars within. Rusticated quoins, plain platband, modillion cornices and balustraded parapet. Hipped roof with 4 dormer windows beneath segmental pediments. Andrew Fountaines enlargements include a stone tower porch with cupola to north east side of original block and extensive additions reflecting the style of the original block. Interior. Cycle of paintings by Antonio Pellegrini; staircase dated 1704 with twisted balusters; various early C18 plaster ceilings and fire-places. Burke's and Savills Guide to Country Houses, vol. III, 1981, pp.161-162. Minimal description due to lack of access to land.	TF 76662 13717	Grade I	Post-Medieval
Grade II* Listed Buildings within 5km					
1077305	NARBOROUGH HALL	Country house. Late C16 extended and refurbished during C18. C16 red brick, gault brick, clunch, flint and some re-used ashlar. Stone plinth and parapet	TF 74937 13142	Grade II*	Post-Medieval

		copings. Pantile roofs. Original block T-plan with gabled outshut to rear forming stem of T. Added east wing now forms L plan. 2 storeys with attics.			
1077485	CHURCH OF ST NICHOLAS	Parish church. Medieval, largely rebuilt in 1891. Flint, rendered tower and ashlar dressings. Plaintile and pantile roofs. Round western tower, aisleless nave with south porch and chancel with vestry. Tower with 4 single light arched bell-openings with cusping. Nave and chancel mainly of 1891 with a re-assembled C14 south door, and 3 C19 Y-traceried windows, one double lancet and a modern 3-light east window. Restored chancel arch with 2 plain-chamfered orders and polygonal responds. 2 plain- chamfered orders and no responds to tower arch.	TF 84256 17211	Grade II*	Medieval
1077661	REMAINS OF BASE OF SOUTH WEST TOWER AND PART OF WEST CLAUSTRAL RANGE OF WEST ACRE PRIORY, 20 METRES EAST OF ABBEY FARM HOUSE	Remains of base of south-west tower and part of west range of cloister of Priory of St. Mary and All Saints. C12 and C13. Flint, stone dressings. Base of Early English tower addition to west end of Norman church tower. East wall with blocked round-headed arch, north wall has 2 blocked pointed arches with angle corbel of vaulting inside tower of C15. Fragment of west end of south aisle attached at east. Norman west cloister range attached at south has four distinct chambers with surviving Norman and Early English evidence. Scheduled Ancient Monument, County Number 170. See F.H. Fairweather and H.L. Bradfer-Lawrence, The Priory of St. Mary and All Saints, Westacre, and excavations upon its site : Norfolk Archaeology, XXIII, 1929, 359-394.	TF 78149 15140	Grade II*	Medieval

1077685	TUDOR LODGINGS AND ATTACHED SERVICE WING/COTTAGE	Former pair of lodgings, now single dwelling and with attached service wing/cottage. Main range: C16 with C20 refurbishment. Knapped and galletted flint facades with keyed brick dressings; coursed flint gable-ends with keyed brick dressings; pantile roof. Some re-used ashlar in blocked openings. Rectangular in plan; originally divided into 2 dwellings. 2 storeys with attic and cellar. EXTERIOR. Nearly symmetrical south facade. Arched entrance to a former through passage at western end (Originally it did not provide access to the adjacent dwelling connecting the entrance facade with the street to the rear).	TF 14974 81807	Grade II*	Post-Medieval
1171759	BARN 100 METRES SOUTH WEST OF ABBEY FARMHOUSE WITH DETACHED GABLE 10 METRES TO NORTH*	Barn. Late medieval. Flint, stone dressings, slate roof. 2 3-stead barns built end to end, formerly extending to now detached north gable. West face has 2 massive stone faced buttresses with set offs. Stone dressed ventilation slits. 2 cart entrances with in-situ stone jambs, C19 brick arched head at north, wooden lintel at south. Detached former north gable has 2 buttresses with set offs. South gable has angle quoins and 2 buttresses with set offs. C19 Queen post strut roof. Some detached tie-beams resting on wall plate with wall posts and struts surviving from an earlier roof. Perhaps part of former west or farm court of the Priory of St. Mary and All Saints. Scheduled Ancient Monument, County Number 170. See F.H. Fairweather and H.L. Bradfer-Lawrence 'The Priory ... Westacre' Norfolk Archaeology XXIII, 1929, pp. 359-394.	TF 15051 78030	Grade II*	Medieval

1269575	MANOR HOUSE INCLUDING ATTACHED SERVICE RANGE TO EAST	House, now house and 2 flats. c1740 with later extensions. Red brick with rendered dressings. Slate and pantiled roofs. EXTERIOR: west front of 2 storeys and dormer attic. 7-window range. Rendered rusticated quoins. Central C20 double glazed doors under pediment on scrolled consoles. One tall fixed window with glazing bars either side lighting central hall. 2 2/2 unhorned sashes each side beyond these, with gauged skewback arches. First-floor centre window is blind. Left-hand 2 windows are C20 casements, remainder are sashes as before. Brick modillion eaves cornice. Hipped roof with one segment-headed dormer fitted with a 3/3 horned sash. 2 ridge stacks. Early C19 2-storey extension to south. 2-window range, with tall French doors to ground floor, sashes to upper floor leading to wrought-iron balcony. Hipped roof with one stack on east and west wall planes. 2-storey extension to east is of 1930s. Rear service range of late C19: 2 storeys, 6-window range, red brick, slate hipped roof. Fenestration of 2/2 unhorned sashes. Ridge stack. 2-storey stable range extends further east. Flint and red brick, pantiled roof. 2 C20 garage doors and mixed fenestration. Gabled roof. INTERIOR: hall has screen of 2 Roman Doric columns and pilasters. Late C19 staircase with cast-iron balustrade. Raised oval roof light supported on consoles. 2 principal ground-floor rooms with complete large-framed panelling and moulded cornices. Shell cupboard in south room. 2 principal bedrooms immediately above have associated dressing rooms. Partial large-framed panelling to north pair of rooms	TF 09030 82419	Grade II*	Post-Medieval
---------	--	---	----------------	-----------	---------------

		and also on staircase upper landing. Complete large-framed fielded panelling to south pair of rooms. C19 roof of principals, collars and one tier of windbraces.			
1269627	Oakleigh House	House, formerly a farmhouse, built in the early-C17, re-fronted in the 1750s, converted to a headteacher's house in around 1945 and a sixth-form centre in 1974, both for Hamond's Grammar School, and then a private dwelling in 1982. MATERIALS: its façade is of red-brick with yellow-brick dressings while the other elevations are of coursed flint with brick dressings. The roof is of black-glazed pantiles and the stacks are of brick.	TF8183109010	Grade II*	Post-Medieval
1269603	48, 50, 50A AND 50B, MARKET PLACE	Shown on OS map as No.50. House, now pair of shops with accommodation above. Late C18. Rendered, roughcast and colourwashed brick and flint. Pantiled roof. EXTERIOR: 2 storeys and dormer attic. 5-window range. 2 C20 shop display windows. Ground floor with applied timber studwork. Five 6/6 unhorned sashes to first floor within exposed sash boxes. Gabled roof. 4 C20 dormers fitted with 2-light top-hung casements. Internal gable-end stack to south. Rear wing rebuilt late C20. INTERIOR: no features of special interest noted. Part of a very significant group in Market Place.	TF8195108865	Grade II*	Post-Medieval
Grade II Listed Buildings and Registered Parks & Gardens within 2km					
1000337	NARFORD HALL	A late C18 landscape park with C19 additions, containing surviving elements of an early C18 formal layout. The construction of Narford Hall was begun in	TF 76605 12832	Grade II (RPG)	Post-Medieval

		<p>June 1702 by Sir Andrew Fountaine, who settled in Norfolk in 1690. Sir Andrew died in 1706 and construction was completed under the direction of his son, another Andrew. Knighted in 1699, he was Vice-Chamberlain to the Prince of Wales and successor to Isaac Newton at the Royal Mint. As a well-established and well-connected collector of works of art, the formal gardens he laid out around the house in the early C18, depicted on a plan by Colen Campbell in 1725 and a series of drawings by Edmund Prideaux of the same period, appear to have been at the forefront of fashion. The geometric layout included groves, walks, and avenues decorated with classical details, the main south avenue extending out of the gardens for c 1.75km to a terminal classical arch. Sir Andrew Fountaine died in 1758 and the formal landscape was gradually deformed over the course of the C18. By 1789 the Hall was surrounded by a small park which replaced the formal pleasure grounds although the northern basin and canal and the southern avenue were retained. In c 1830 another Andrew Fountaine made substantial enlargements to the Hall and added a stable courtyard to the north-east. In the same decade James Grigor visited the site, noting in his Eastern Arboretum (1841) the range of tree species surviving from the formal landscape and recording that the lake, 'already of great extent' was 'now being enlarged'. By 1891 (OS) the lake, known as Narford Lake, covered c 18ha and the park had been extended to the west. The Fountaine family continued to live at Narford into the C20 and the park remained heavily</p>			
--	--	--	--	--	--

		treed until at least 1946. Since that time parts have been put under the plough and some trees have been lost. The site remains (1999) in private ownership.			
1269602	46, MARKET PLACE	House, later bank and house, now shops and accommodation. Late C18. Used as bank and house early C20, 2 shops since 1970s. Red brick; roof of black-glazed pantiles with some red pantiles. EXTERIOR: 3 storeys in 5-window range. Ground floor with 2 C20 shop fronts. Five 1/1 horned sashes to each floor above, all with painted surrounds, those to first floor with eared surrounds. Second-floor platband. Gabled roof with internal gable-end stack to north. South gable head with minor tumbling. 3-storey rear wing. INTERIOR: shop premises opened out to ground floor. Part of a very significant group in Market Place.	TF8194508876	Grade II	Post-Medieval
1269600	38, MARKET PLACE	House, now shop and accommodation over. Mid C18, altered late C18 and early C20, when converted to shop. Painted brick; roof of black-glazed pantiles. EXTERIOR: 3 storeys in 5-window range. C20 double plate-glass shop front to left of 4-panelled door within plain timber doorcase. Double doors to right of elevation lead to passageway to rear. Five 6/6 unhorned sashes to first floor and five 3/3 unhorned sashes to second floor. Wide timber eaves cornice. Bell-cast gabled roof. Internal gable-end stacks north and south. INTERIOR: opened into single continuous retail area in C20. Former front room with mid C18 moulded cornice and a doorway in S wall with pulvinated frieze. Rear passageway leads to late C18 staircase extension: stick-baluster stairs with ramped	TF8193108898	Grade II	Post-Medieval

		handrail; arched staircase window. First-floor front room with moulded dentilled cornice and 6-panelled doors. Second-floor staircase landing has 2 panels of fielded dado.			
1269599	PLOWRIGHT PLACE	Foundry, now shopping arcade. c1860. Converted to shopping arcade 1982. Yellow brick facade under slate roof (front) and pantiles (rear); rear ranges of flint with brick dressings and pantiled or corrugated asbestos roofs. EXTERIOR: 2-storey facade in 5-window range, nearly symmetrical. Centre carriageway to rear defined by pilasters rising to shaped gable and enclosing an arched 2-light casement at first floor. One twin casement to each floor right and left, with raised surrounds and keyblocks. Single recessed bay to left containing arched pedestrian doorway to rear; single-light casement above, also with raised surround and keyblock. Right-hand bay with C20 shop display window and a single-light casement to first floor within raised surround with keyblock. Gabled roof. No stacks. Rear courtyard with long range on south side: 2 storeys, 11-window range. 4 former carriage entrances blocked in 1982 with doorways or shop display windows. Fenestration of 1982 casements. Some first-floor loading doors boarded over. Dentil eaves cornice. Gabled roof. INTERIOR: 2 cast-iron columns within central carriageway. No features of special interest noted in southern range.	TF8191608921	Grade II	Modern

1269597	34 AND 34A, MARKET PLACE	Former ironworks and foundry with showrooms and stores, built in 1870 by the local builder Matthias Goggs, converted into a shopping arcade in 1982, with first-floor flats created around 2014.	TF8190708933	Grade II	Modern
1269595	FITZROY HOUSE	Shown on OS map as RDC Office. House, now offices. c1770. Red brick; roof of black-glazed pantiles. EXTERIOR: 3 storeys in 5-window range. Central 6-panelled and fielded door, the upper 2 panels glazed. Panelled reveals. Doorcase with pulvinated frieze and a pediment on consoles. Two 6/1 unhorned sashes to left and two 1/1 unhorned sashes to right. Platband at first floor and sill bands to first- and second-floor windows. 6/6 unhorned sashes to upper floors, except for central second-floor 2/2 horned sash. All windows under gauged skewback arches. Gabled roof. Internal gable-end stack to south. 2- and 3-storey red brick wing extends to rear: 9 arched recesses to ground floor, either with doorways or Diocletian windows in arches. Platband at first floor. First-floor and second-floor windows replaced late C20. Dentil eaves cornice. Hipped roof to 3-storey east part, remainder gabled. INTERIOR: split into office units. C18 open-string staircase with 3 turned balusters to each tread, fluted newel posts, ramped moulded handrail. Dado panelling matches. Glazed lantern at roof level. Used as District Council offices in the mid C20, private offices late C20.	TF 81896 08938	Grade II	Post-Medieval

1269552	Gate piers to Whitsands Road and boundary wall south-west of 20 Market Place	Gate piers, built in the mid-to late C18 and rebuilt in the C19, and attached boundary wall, built in the mid-to late C18.	TF8178808948	Grade II	Post-Medieval
1269591	26, 28 AND 30, MARKET PLACE	Formerly known as: Brandon House and Chatteris House MARKET PLACE. Pair of houses, now offices. Late C18, converted to offices mid C20. Red brick; roof of mixed red and black-glazed pantiles. EXTERIOR: 3 storeys in 7-window range, centre 3 window bays broken forward. 2 symmetrically-placed doorways: 4-panel doors within stuccoed doorcases with minor incised decoration. Plain entablatures with dentils and hood. Platbands at first and second floors. 6/6 unhorned sashes to ground and first floors, the 2 to extreme left of ground floor replaced in C20 with 1/1 horned sashes. Gauged skewback arches. Seven 3/3 unhorned sashes to attic floor. Dentil eaves cornice. Gabled roof. INTERIOR: ground-floor front room to south with moulded cornices and lugged window surrounds. North ground-floor room with modillion cornice. Open-string staircase with 2 turned balusters per tread, scrolled tread ends, baluster newels and ramped handrail.	TF8188308957	Grade II	Post-Medieval
1269613	ASSEMBLY ROOMS	Assembly rooms. 1776-78, with south front added 1817 by William Newham. Repairs and alterations in 1950s. Red brick; roof of black-glazed pantiles. South front stuccoed. EXTERIOR: west front of one storey in a 5-window range. Central 3 bays broken forward and	TF8192108964	Grade II	Post-Medieval

		rebuilt in 1950s. Central 6-panelled door. Fenestration of 6/6 unhorned sashes under gauged skewback arches, those to centre 3 bays with segmental heads. Outer bays with original brickwork and dentil eaves cornice. Hipped roof. South front of one storey. 4 late C19 2-light casements to left set within early C19 moulded surrounds with hoods. Double-leaf C20 8-panelled door to right under 5-paned fanlight and within rusticated arch. Plain parapet. Shallow gabled roof. INTERIOR: south door leads to wide entrance passageway and to reception room at right angles: 3 doorways with lugged surrounds. South windows have lugged internal surrounds. Suspended C20 ceiling. 3 folding doors lead to main assembly room lit from the 5 west windows, which have arched internal surrounds. Suspended C20 ceiling. Gallery at north end. (Norfolk Archaeological Unit: Sites and Monuments Record).				
1269614	2, MARKET PLACE	House, now offices. c1770 east block with c1860 west extension. Red brick, English bond to east block; partly rendered; concrete tiles and pantiles. EXTERIOR: east block of 2 storeys. One late C19 2-light casement to each floor. North return rendered. Gabled roof. Internal gable-end stack to south. 3-storey west block; single-window range. Renewed plate-glass shop display window to ground floor with hood and canopy box. One 3/3 horned sash to each floor above under segmental gauged arches. Canted angle containing half-glazed C20 door and one 1/1 horned sash to each floor above under segmental gauged arches. Dentil	TF 08976	81912	Grade II	Post-Medieval

		eaves cornice. Hipped roof. INTERIOR: no features of special interest noted.			
1269587	20 Market Place	Former house, built between around 1740 and 1750 incorporating a mid- to late-C17 crosswing at the rear, adapted for use as a bank in the early C19, and as a school headmaster's house in the early C20.	TF8185508984	Grade II	Post-Medieval
1269615	LONDON HOUSE	House, now offices. Early C18, converted to offices mid C20. Red brick, partly rebuilt late C19 and mid C20. South and east walls pebbledashed. Concrete interlocking roof tiles. Plan of 2 parallel ranges. EXTERIOR: 2 storeys. South gable ends with Dutch gables. West front is 5-window range. Late C19 plate-glass shop display window to south end, mid C20 display window to north. Two 4/4 horned sashes to south at first floor, 3 mid C20 6/6 horned sashes to north. Gabled roofs. Ridge stack in centre of east range. INTERIOR: converted to offices and opened out into single spaces in C20. Part of a very significant group of buildings in Market Place.	TF 81902 08986	Grade II	Post-Medieval
1269586	18 Market Place	Swaffham's significance in the Middle Ages stemmed from its position as a crossroads on main east-west and north-south routes, not for its position on a river. The market and two fairs were established by the mid-C13 on the triangular Market Place, bounded on the north side by the present Lynn Street. The marketplace was likely originally open to the church on the eastern side, but C17 development closed this off. The Shambles developed in the centre of the marketplace in the early post-medieval period. The	TF8184808992	Grade II	Medieval

		late C18 was a period of some social importance for the town when it became at least locally fashionable; there had been a racecourse at Swaffham since the C17 and the Earl of Orford founded the Coursing Club in 1786. The Assembly Rooms were constructed between 1776 and 1778, and the south front was added in 1817. The overall impression of the town centre is mid- to late Georgian, but there is evidence of C16 and C17 work behind many frontages.			
1269588	Gate piers and flanking walls north of 18 Market Place	Gate piers and flanking wall, built in the mid- to late C18, walls rebuilt in the late C20.	TF8184709004	Grade II	Post-Medieval
1269584	FRONT WALL TO NORTH OF NUMBERS 16 AND 18 OAKLEIGH HOUSE	Boundary wall. Early C17, altered c1740. Random flint and brick. Brick dressings to plinth course. Brick capping renewed c1740.	TF 81822 09029	Grade II	Post-Medieval
1269594	31, MARKET PLACE	House, now shop. c1770, converted to shop C20. Red brick; roof of mixed red and black-glazed pantiles. EXTERIOR: 2 storeys; 3-window range. One early C20 plate-glass display window either side of doorway, which is within stuccoed surround with minor incised decoration. Three 6/6 unhorned sashes at first floor within flush frames and under gauged skewback arches. Dentil eaves cornice. Gabled roof with truncated internal gable-end stacks to east and west. West gable-end with attic platband and tumbling. Rear wing of 2 storeys and dormer attic: one C19 and one C20 door, 2/2 horned sash to left; two 6/6 unhorned	TF 81882 09049	Grade II	Post-Medieval

		sashes to first floor, gabled roof and 2 gabled C18 dormers with 2-light casements. Ridge stack left of centre. INTERIOR: C18 brick cellar. C20 staircase to rear.				
1269593	29, MARKET PLACE	House, now shop. Early C17, altered and converted late C19 to shop. Flint with brick dressings, the facade rendered and colourwashed. Pantile roof. EXTERIOR: 2 storeys; 2-window range. Ground floor with late C20 plate-glass display window to right and a doorway in the angled corner. One plate-glass window to the left. First floor lit through 2 late C20 2-light casements. Gabled roof. Internal gable-end stack to east. East gable wall of early C17: flint with brick dressings and brick diaper patterning. C20 extensions to rear. INTERIOR: first floor not inspected but ground floor has no features of special interest. Part of a very significant group in the Market Place and included for group value.	TF 09049	81869	Grade II	Post-Medieval
1269596	33, MARKET PLACE	House, now shop. Early C18, converted to shop C20. Rendered and whitewashed flint and brick; roof of black-glazed pantiles. EXTERIOR: 2 storeys. Single-window range. Late C20 plate-glass shop front. One 2/2 C20 horned sash to first floor. Gabled roof. Internal gable-end stack to west shared with No.33. INTERIOR: opened into single space late C20.	TF 09050	81888	Grade II	Post-Medieval
1269592	27, MARKET PLACE	House, now shop. Late C17, converted to shop late C19. Flint and brick, the ground floor rendered and whitewashed; pantile roof. EXTERIOR: 2 storeys and dormer attic. 2-window range. Late C19 canted shop	TF 09049	81858	Grade II	Post-Medieval

		display window to left. Doorway to right of centre, with a reeded surround and a hood on modillion consoles continuous over a 2/2 horned sash to its right. One 8/8 unhorned sash to first floor (left) and one 6/6 unhorned sash (right), both with C19 timber hoods. Rebuilt parapet with C19 cast-iron cresting. Gabled roof with one flat-topped dormer fitted with a 2-light casement. Internal rebuilt gable-end stacks east and west. INTERIOR: east wall with blocked fireplace, formerly with winder stair on south side. Chamfered bridging beams with tongue stops to ground and first floors. C18 roof: principals, 2 tiers of taper-tenoned butt purlins and collars.			
1269590	25, MARKET PLACE	House, now 2 shops. Early C17, altered late C19. Rendered and whitewashed flint and brick; pantiled roofs. T-shaped plan. EXTERIOR: 2-storey facade in 2-window range. 2 C20 plate-glass shop display windows and a central C20 glazed door. Two 2/2 horned sashes to first floor. Gabled roof with rebuilt internal gable-end stack to east. 2-storey rear wing with label stops to doorway on east side; one 4-light early C19 casement and one 2-light casement to first floor. Reused datestone: 1655. INTERIOR: chamfered bridging beams with tongue stops and run-out stops. Ground-floor east room with 2 wave-moulded bridging beams with run-out stops. Roof of rear wing of upper crucks, one remaining visible.	TF8185009050	Grade II	Post-Medieval
1269589	NUMBERS 21 (KINGS ARMS	Public house and shop. Mid C17. Flint and brick, pantiled roof. Ground floor rendered and colourwashed. EXTERIOR: 2 storeys and dormer	TF8183909051	Grade II	Post-Medieval

	PUBLIC HOUSE) AND 23	attic. 4-window range. Left-hand 3 window bays correspond to public house front consisting of 2 doorways in C19 doorcases, that to right with hood. Alternating with doors are three C19 3-light cross-casements under segmental arches. Right of elevation has C20 plate-glass shop display window. First floor lit through four 4-light mullioned windows, that to right expanded into a 4-light cross-casement. Gabled roof with 4 flat-topped dormers fitted with 2-light casements. Internal gable-end stacks and central ridge stack, all rebuilt in C20. INTERIOR: first floor not inspected but ground floor has no features of special interest. Listing NGR: TF8183909051			
1269598	POST OFFICE	House, now post office. Late C18, raised into 3 storeys mid C20. Red brick, slate roof. EXTERIOR: 3-window range. Timber doorcase left of centre with bobbin decoration to jambs and frieze. Moulded hood with 2 baluster pendants. C20 plate-glass display window to right and left. Three 2/2 horned sashes to first floor. Three 2/2 C20 horned sashes to second floor. Gabled roof with internal gable-end stacks north and south. INTERIOR: opened into single retail area. No features of special interest noted. Part of a very significant group in Market Place.	TF 81895 09052	Grade II	Post-Medieval
1269601	39 AND 41, MARKET PLACE	Formerly known as: National Provincial Bank MARKET PLACE. House. c1730-40, on site of early C16 house. Red brick laid in Flemish bond; roof of black-glazed pantiles. EXTERIOR: 2 storeys and dormer attic. 7-window range. Mid C19 shop front to left of elevation: 4 engaged Roman Doric columns	TF 81918 09055	Grade II	Post-Medieval

		<p>contain a 6-panelled passageway door to left, a 3-panelled double-leaf door in centre and a late C20 display window to right. Remainder of elevation with a late C20 plate-glass shop display window. Seven 6/6 unhorned sashes to first floor, under gauged skewback arches. Timber eaves cornice with modillions. Gabled roof with 2 flat-topped dormers separated by a gabled dormer. 2 left-hand dormers have 3/3 unhorned sashes, the other is blind and painted in imitation. Rebuilt internal gable-end stack to west; C18 ridge stack right of centre. INTERIOR: passageway to left with roll and hollow-moulded joists and wall plates, c1500. Ground floor opened out in C20 but formerly 3 rooms wide, the cornices remaining. First-floor centre room with moulded cornices, 2 blocked doorways into adjoining property (No.41), and large-framed panelling on north wall, partly boarded over. C18 staircase at attic level only: closed string, turned balusters and moulded handrail.</p>				
1269585	19,19A AND 19B, MARKET PLACE	<p>House, now 2 shops and office. Late C18, converted late C20. Red brick; roof of black-glazed pantiles. EXTERIOR: 2 storeys and dormer attic in 5-window range. Ground floor with central late C20 plate-glass door under C19 hood on brackets. One late C20 plate-glass shop front right and left in late C19 style. First floor lit through five 6/6 C19 unhorned sashes within C18 flush frames and set under gauged skewback arches. Dentil eaves cornice. Gabled roof. 2 flat-topped dormers separated by a gabled dormer, all with 2-light casements. No stacks. INTERIOR: first floor not</p>	TF 09058	81815	Grade II	Post-Medieval

		inspected, but nothing of special interest noted on ground floor.			
1269604	55 AND 57, MARKET PLACE	Pair of shops with accommodation above. Mid C19. Rendered and colourwashed brick. Roof of black-glazed pantiles. EXTERIOR: 3 storeys; 3-window range. 2 C20 plate-glass shop fronts. To right of elevation a half-glazed door leads to upper floors. Three 2/2 unhorned sashes to each floor above. Projecting eaves and gabled roof. Internal gable-end stacks east and west, that to west rebuilt. INTERIOR: no features of special interest noted. Part of a very significant group in Market Place.	TF8197009066	Grade II	Modern
1269607	4-16, STREET LYNN	Terrace of 7 houses. Early C19. Flint with brick facade. Red pantiled roof, black-glazed to No.16. No.14 pebbledashed. EXTERIOR: 2 storeys. Each house is a single-window range, 7 window-bays in all. Original disposition of 4 flush panels to the door under a hood, with one 3/3 unhorned sash to the right on each floor. Variations as follows: only No.16 retains sashes, others replaced by late C19 2/2 horned sashes. No.4 with a full-height canted bay window fitted with 2/2 horned sashes. Nos 4, 6 & 12-16 with C20 half-glazed doors, No.16 additionally with a pilastered doorcase. Nos 10-16 with bracketed eaves. Gabled roofs with 7 ridge stacks. INTERIOR: not inspected.	TF8178109082	Grade II	Modern
1269546	ASTON HOUSE AND DALTON HOUSE	House, now 2 houses. Mid C17, raised and refronted c1830, subdivided C20. Flint and brick with red brick facade. Pantiled roof. EXTERIOR: facade of 3 storeys in 6-window range. Third bay (from left) with C20	TF8195909209	Grade II	Post-Medieval

		<p>glazed double doors. Fenestration at ground and first floors of 6/6 unhorned sashes with gauged skewback arches. Attic floor with 3/3 unhorned sashes. Modillion eaves cornice. Gabled roof. Internal gable-end stacks north and south. Additional side bay to south end added late C19 containing doorway: recessed half-glazed door within reeded doorcase. North gable of mid C17 cut flint decorated with brick diaper. Stuccoed 2-storey addition to west of this gable containing recessed 6-panelled door, the upper 4 panels glazed. One 3/6 unhorned sash to first floor. Rear with 2-storey and dormer attic extension of c1830. At first floor is a curved bay window fitted with horned sashes with glazing bars disposed as 4/1 to sides and 6/6 to centre. INTERIOR: No.24: 6-panelled doors, C20 chimneypiece in main east room, deep plaster cornices in same room. C20 cast-iron staircase. No.26: principal staircase of c1830 has stick balusters and ramped and wreathed handrail; upper stairwell with 6 C19 plaster panels depicting Stations of the Cross and 3 larger panels of allegorical figurative scenes. Roof of principals and 2 tiers of taper-tenoned butt purlins.</p>			
1269549	BAPTIST CHAPEL AND HALL	<p>Baptist Chapel and attached church hall. 1858. Red brick with gault-brick facade. Slate roof. EXTERIOR: facade with 2 identical 3-storey towers with, between them, a recessed gabled centre. Towers with pilasters at corners. Each tower has a 4-panelled door under a fanlight without glazing bars. Arched first-floor window with margin glazing, brick corbel courses below lantern top stage: paired corner pilasters and open arched</p>	TF8194309317	Grade II	Modern

		windows to cardinal points. Pyramid roof. Centrepiece with 3 stepped arched windows to each floor. Margin glazing. Gabled roof. Returns have 5 top-hung casements. At west end is a red-brick church hall in a 3-window range of 6/6 horned sashes. INTERIOR: gallery to east, north and south sides supported on cast-iron twisted columns with Composite capitals. Cast-iron balcony rails and moulded timber handrail. Shallow dished plaster ceiling. Organ gallery at west end. Below is a marble total immersion font with steps right and left. Pulpit and seating intact. 2 closed-string staircases with turned balusters rise to gallery at east end.			
1269616	4, MARKET PLACE	House, now shop. c1780, converted to shop c1820. Painted brick. Pantiled roof. EXTERIOR: 2-storey, single-window range. Late C20 half-glazed door to left. Early C19 bowed shop display window to right with 8 by 3 panes and a moulded and dentilled cornice. Platband at first floor continuous round building. One 3/6 unhorned sash at first floor. Dentil eaves cornice. Gabled roof. No stacks. C20 lean-to outshut at rear. INTERIOR: floor removed C20. C20 steel winder staircase inserted. Roof of principals, collars and purlins.	TF 81910 09018	Grade II	Post-Medieval
1269617	FORMER CORN HALL	Corn hall, now offices. 1858. By Mathias Goggs. Red brick with gault-brick dressings and slate roof. Rectangular 2- by 4-bay block, each bay defined by giant arched recesses on pilasters with minimal capitals. EXTERIOR: 2-light stone mullioned ground-floor casements under segmental heads. 2-light	TF8196509007	Grade II	Modern

		arched upper casements with stone mullions, the mullions with foliate capitals. Punched triangular inserts between wall arches. Block and saw-toothed eaves cornice. Gabled roof. North and south returns similar: roundel under each gable with sheaves of corn. INTERIOR: C20 staircase inserted, suspended C20 ceilings; split into offices.			
1269618	K6 TELEPHONE KIOSK NORTH OF FORMER CORN HALL	Type K6 telephone kiosk. 1935 by Sir Giles Gilbert Scott. Various contractors. Cast-iron. Square kiosk with domed roof. Unperforated crowns in top panel and margin glazing to windows and door.	TF8196409025	Grade II	Modern
1269619	8, MARKET PLACE	House, now shop. c1770, front range c1780, altered C20 and converted to shop. Red brick, rendered and whitewashed to east facade. EXTERIOR: 2 storeys, 5-window range. Late C20 plate-glass shop front. Five 6/6 unhorned sashes at first floor. Gabled roof with internal gable-end stacks north and south. South return with platband at first floor and 2 punched octagonal recesses in gable head, that to east with sundial gnomon. Rear range with C20 windows. INTERIOR: ground floor opened into continuous retail areas. First floor not inspected.	TF 81932 09018	Grade II	Post-Medieval
1269620	9, MARKET PLACE	House, now shop. Early C19, converted to shop C20. Painted red brick. Pantiled roofs. 2 parallel ranges. EXTERIOR: 2 storeys and dormer attic; east front is a 2-window range. C20 plate-glass display window. Two 2/2 horned sashes to first floor under gauged skewback arches. Modillion eaves cornice. Gabled roof. Central segmental-headed dormer fitted with a	TF 81934 09005	Grade II	Modern

		3/3 unhorned sash. Internal gable-end stack to north. North gables each lit through a 6/6 unhorned sash. Rear gable head rebuilt C20. INTERIOR: ground floor opened into single retail area with applied C20 timberwork.			
1269621	10, MARKET PLACE	House, now shop. Early C19, converted to shop C20. Red brick, rendered, colourwashed and scored to imitate ashlar. Roof of mixed red and black-glazed pantiles. EXTERIOR: 3 storeys; 3-window range. C20 plate-glass shop fronts with central entrance. Two 6/6 horned sashes to first floor and a central blind window. Two 3/3 horned sashes to second floor with a blind central window. Gabled roof. Rebuilt internal gable-end stacks. Single-storey rear outshut and a late C20 single-storey rear extension. INTERIOR: ground floor converted to 2 retail areas in late C20. Part of a very significant group in the Market Place.	TF 81940 09000	Grade II	Modern
1269622	11 AND 12, MARKET PLACE	3 shops with accommodation above. Mid C19. Painted gault brick. Pantiled roofs. EXTERIOR: 2 storeys rising into 2 storeys and dormer attic at north end. 4-window range. 3 shop fronts, that to centre late C20, to right and left early C20, both with canted display windows. To north the display window returns into north wall and has glazing bars. Two 2/2 unhorned sashes at first floor right; two 6/6 unhorned sashes to first floor left. Gabled roof. Single right-hand window bay rises to attic floor lit through one through-eaves dormer fitted with a 2/2 unhorned sash. Hipped roof. INTERIORS: opened out to provide continuous retail areas.	TF 81943 08989	Grade II	Modern

1269623	13, MARKET PLACE	Shop with accommodation above. Mid C19. Rendered and colourwashed brick. Pantiled roof. EXTERIOR: 3 storeys; 2-window range. Late C20 plate-glass shop front to right. To left is 6-panelled door leading to upper floors: plain doorcase and overlight. Two 2/2 sashes each floor above, those to second floor without horns. 2 hipped roofs. INTERIOR: ground floor opened out into continuous retail area. Upper floors not inspected.	TF 08976	81945	Grade II	Modern
1269624	14, MARKET PLACE	House, now shop. Late C18, converted to shop mid C19. Rendered and colourwashed brick. Pantiled roof. Corner site. EXTERIOR: 2 storeys and dormer attic. Mid C19 plate-glass shop front wraps around corner, formerly with entrance in canted corner consisting of a pair of columns with foliated capitals supporting a nodding arch with hollow mouldings and fleuron decoration. Door replaced with window. One 2/2 horned sash to first floor of east and south fronts. South front with doorway to left of shop front formerly leading to first-floor accommodation, now main shop entry. Gabled roof hipped to east with one flat-topped dormer fitted with a C20 2-light casement to south and east roof slopes. INTERIOR: no features of special interest noted.	TF 08974	81954	Grade II	Post-Medieval
1269625	15, MARKET PLACE	House, now restaurant. Early C18, converted late C20. Red brick laid in English bond. Pantiled roof. EXTERIOR: 2 storeys; 3-window range. Early C20 half-glazed door left of centre, with a small arched window to its right. One 3-light C19 casement right and left of elevation. Three 3-light centre-opening	TF 08970	81947	Grade II	Post-Medieval

		casements to first floor. Dentil eaves cornice. Gabled roof with internal gable-end stacks east and west. INTERIOR: not inspected.			
1269626	15A, MARKET PLACE	Building probably dating to the late C17, possibly built as part of an inn, certainly in this use by 1686. Converted into retail premises by the 1880s.	TF 81938 08967	Grade II	Post-Medieval
1269634	WHITE HART INN	Public house. Probably late C17 core but rebuilt late C18. Flint and brick, the facade rendered and colourwashed. Pantile roof. EXTERIOR: 2 storeys and dormer attic. 4-window range. Pilaster strips at corners and another defining first bay (from left) rise to parapet with banding. Central half-glazed door within fluted timber doorcase with dentilled architrave and plain hood. One 6/6 unhorned sash to left and 2 to right. 4 similar first-floor sashes. Gabled roof with 3 flat-topped dormers. Internal gable-end stack to south. INTERIOR: ground floor opened into single space. No features of special interest noted.	TF8196108849	Grade II	Post-Medieval
1269635	TOWN HALL AND ATTACHED FRONT RAILINGS	House, later used as town hall. Early C19. Red brick, slate roofs. EXTERIOR: 2 storeys and dormer attic; 3-window range. Window bays project forward slightly. Central 6-panelled door behind Greek Doric doorcase consisting of 2 columns and 2 pilasters supporting entablature. One 2/2 horned sash right and left under arched heads in which are painted arched hoods. Three 4/4 horned sashes to first floor with plastered decorative gauged skewback arches. Gabled roof. 3 flat-topped dormers fitted with 2/2 horned sashes. Stack on rear roof slope to left and front roof slope to	TF8196808836	Grade II	Modern

		right. INTERIOR: council chamber, formerly dining room: 2 fluted Greek Doric columns at south end, moulded cornices and late C19 marble chimneypiece. Late C19 stick-baluster staircase with panelled newel posts. SUBSIDIARY FEATURES: circular-section wrought-iron railings to street.				
1269666	STRATTONS HOTEL	House. Mid C18 with c1890 house attached at east end. Original block of red brick and pantiled roof (slate to rear). Addition to east of red brick under machine-tiled roof. EXTERIOR: single storey and dormer attic on basement. 5-window range. Central bay projects under a gable. 4-, 2- and 3-light C20 basement windows. Central late C20 double-leaf doors flanked by one small late C20 window either side, reached by flight of stone steps to right and left with square-section wrought-iron railings. Steps have central roundel with keyblocks lighting basement. Diocletian window in gable head, with keyblocks, beneath a painted sundial face. Main first floor with an outer Venetian window either side, fitted with 1/1 unhorned sashes and 2 further 1/1 simple sashes. Gabled roof. 2 gabled dormers fitted with 1/1 unhorned sashes. Internal gable-end stacks west and east. 2-storey addition to east; irregular 4-window range. C20 door to left; three 1/1 horned sashes to right and 4 further 1/1 horned sashes to first floor. Hipped roof with gable over centre of facade containing a Diocletian window. Stacks on side slopes. INTERIOR: C18 range with C18 cornices to principal rooms and C19 fireplaces. C19 staircase with bobbin-turned balusters and ramped handrail.	TF 09123	81880	Grade II	Post-Medieval

			C19 range with splat balusters to closed-string staircase, panelled newels with ball finials.			
1466754	Swaffham Memorial	War	A First World War memorial, erected 1920, with later additions.	TF8195209026	Grade II	Modern
1269606	METHODIST CHURCH		Wesleyan chapel, now Methodist church. 1813. Gault-brick facade, rendered returns and slate roof. EXTERIOR: 2-storey elevation in 3 bays. Each bay separated by panelled giant pilasters. C20 fixed windows with margin glazing and coloured glass, those to upper floor arched and set within arched recesses. Gauged arches. Centre window a horned sash. Centre bay at ground floor with 4 Roman Doric columns rising to plain cornice and forming a recessed porch. 6-panelled doors in north and south inner walls of porch, with doorcases with paterae. Red brick eaves cornice carrying 4 stone obelisks on parapet. Pediment over centre bay. Hipped roof. INTERIOR: panelled west gallery on 3 cast-iron columns reached by 2 stick-baluster staircases. Suspended C20 timber ceiling.	TF 82018 08840	Grade II	Modern
1269633	1, LONDON STREET		Includes: Nos.2 AND 4 PIT LANE. Shop and warehouse. Early C19, converted to shop and offices late C20. Red brick; slate roof. EXTERIOR: 3 storeys. North elevation is a 4-window range. 2 half-glazed C20 doorways, two 6/6 unhorned sashes and one 8/8 unhorned sash and a further top-hung casement at west end. Four 6/6 unhorned sashes to first floor, four 2-light C20 casements to attic floor. All openings below attic have gauged skewback arches. Hipped roof	TF 82009 08851	Grade II	Modern

		gabled to east end. Central ridge stack. West return with late C19 shop display window: 4 reeded pilaster strips framing half-glazed door to right and 3-part display window to left. One 8/8 unhorned sash to first floor and a C20 2-light casement to attic floor. INTERIOR: no features of special interest noted.			
1269569	THE GREYHOUND PUBLIC HOUSE	House, now public house. Early C16, extended to south c1740. Rendered and colourwashed brick and flint. Pantiled roofs. EXTERIOR: 2 storeys. 4-window range. 2 half-glazed doors with stuccoed brick doorcases carrying plain entablatures. Three 2/2 horned sashes to ground floor, four 6/6 unhorned sashes to first floor. Gabled roof. C19 ridge stack over right-hand doorway; internal gable-end stack to north. Rear with 3-storey C19 wing, a 3-window range, partly rebuilt mid C20. To north a 2-storey range of c1740: Flemish-bond red brick, 2-window range of C20 casements and sashes, gabled roof. INTERIOR: groin-vaulted C18 brick cellars, the vaults on 2 square brick piers. C16 part to north has at ground floor 3 bays of bridging beams with wave and hollow mouldings, roll-moulded wall plates with fillets, and joists with roll and hollow mouldings. Wide fireplace to south with some C17 brick.	TF8200508888	Grade II	Medieval
1269568	93 AND 95, MARKET PLACE	House, now shops and accommodation. Early C19, converted late C19. Rendered and colourwashed brick and flint; roof of black-glazed pantiles. EXTERIOR: 2 storeys and dormer attic in 3-window range. Central late C19 doorcase flanked by C20 shop fronts either side. Three 6/6 sashes to first floor, that to right with	TF8200008902	Grade II	Modern

		horns. Plastered wall plate. Gabled roof with 2 late C19 flat-topped dormers fitted with casements. Internal gable-end stack to south. INTERIOR: ground floors opened out for retail areas. Listing NGR: TF8200008902			
1269567	MONTPELLIER HOUSE AND WESTERN HOUSE	A house built in the 1750s, used as retail premises in the C20 and divided into two units in the late C20.	TF8199908915	Grade II	Post-Medieval
1269576	WHITE LODGE	House. Mid C18. Painted flint and brick; pantile roofs. 2 wings arranged in L-shape. EXTERIOR: north front of 2 storeys and attic in 7-window range. Centre 3 bays broken forward beneath pediment. Half-glazed central door within timber doorcase with pediment. One 6/6 horned sash to 5th and 7th bays from left on ground floor; one 1/1 horned sash to 6th bay and a 6/6 unhorned sash to 7th bay on first floor. All other windows blind. Low parapet. Round window in pediment. Gabled roof with 2 flat-topped dormers fitted with C20 casements. Ridge stack left of centre and external gable-end stack to west, rebuilt C20. East gable with a 2-storey canted bay window with 6/6 unhorned sashes, the middle sashes rising into glazed arches. East side of south wing is 4-window range lit through sashes of various dispositions. In angle between wings is a 2-storey C20 extension. INTERIOR: stick-baluster staircase with ramped handrail. North range with chamfered bridging beams with tongue stops at first floor. East room with late C18 timber fire surround decorated with plaster Greek	TF 82056 08942	Grade II	Post-Medieval

		figures in frieze. Roof of principals and one tier of taper-tenoned butt purlins.			
1269566	RED LION INN	Public house. Early C18, altered in C20. Pebbledashed and colourwashed flint and brick; pantiled roof. EXTERIOR: 2 storeys in 3-window range. Four 2/2 horned sashes to ground floor and a C20 glazed doorway to right of centre. 3 similar first-floor sashes. Gabled roof. Internal gable-end stack to north, second stack on rear roof slope. INTERIOR: opened into single retail area late C20.	TF 81998 08942	Grade II	Post-Medieval
1269578	CHURCHYARD WALLS TO WEST OF WHITE LODGE	Churchyard walls. C18 and C19. Red brick laid in Flemish and English bond with saddleback brick coping. Listing NGR: TF8203208945	TF8203208945	Grade II	Post-Medieval
1269565	85, MARKET PLACE	House, later shop with accommodation above. Late C18, with later alterations. Pebbledashed and whitewashed brick. Roof of black-glazed pantiles. EXTERIOR: 2 storeys and dormer attic. 2-window range. Ground floor with curved plate-glass shopfront of c1900, under deeply projecting canopy box. Two 2/2 horned sashes to first floor. Parapet. Gabled roof with one flat-topped dormer fitted with a 2/2 horned sash. Internal gable-end stack to south. INTERIOR: no features of special interest noted.	TF 81997 08950	Grade II	Post-Medieval
1269577	CHURCHYARD WALLS EAST OF WHITE LODGE INCLUDING CHURCHYARD	Churchyard walls and gate. C18 and C19. Red brick, terminating at east end with mixed brick and flint with some stone. Gate of c1840-50. Cast iron. 2 semicircular screens with gates between them hinged to a central stile of 2 square-section verticals. To left is	TF8214108960	Grade II	Post-Medieval

	GATES AT EAST END	a gate under a low overthrow for dog-cart. The walls were included on 17.01.73 and the gates on 19.10.95.			
1269564	83 AND 83A, MARKET PLACE	House, now offices and flat. Late C18, converted C20. Red brick laid in Flemish bond; roof of black-glazed pantiles. EXTERIOR: 2 storeys and dormer attic; 3-window range. Double C20 doors in centre within late C18 timber doorcase of pilasters rising to plain entablature. One late C20 canted display window right and left. Two 6/6 unhorned sashes at first floor under gauged skewback arches and set within shallow recesses. Blind central window. Gabled roof with 2 late C20 dormers fitted with 2-light casements. Central ridge stack. North return wall rebuilt late C20. INTERIOR: opened out late C20 and converted to offices.	TF8199208958	Grade II	Post-Medieval
1269629	GATES TO CHURCHYARD OF ST PETER AND ST PAUL	Churchyard gates. c1840-50. Cast- and wrought-iron. 4 open trellis piers of square-section verticals rise to open volute finials with fittings for gas lamps. Between outer pairs of piers are wrought-iron gates: square-section verticals, top rail and bottom rail; top rail above scrolled frieze; bottom rail with diamond-pattern dado. Similar screen to south.	TF8200908992	Grade II	Modern
1269563	63, MARKET PLACE	House, now shop. c1540, converted to shop C19 and altered 1965. Rendered and colourwashed brick and flint, pantiled roof. Probably originally a lobby-entrance plan. EXTERIOR: 2 storeys, 2-window range. Ground floor with glazed shop display windows of 1965. Two 2/2 horned sashes to first floor. Dentil eaves cornice. Gabled roof. Ridge stack set right of centre.	TF8199209037	Grade II	Medieval

		INTERIOR: ground floor with mid C16 roll-moulded bridging beams with run-out stops. Some mid C18 large-framed panelling. 2-panel doors with HL-hinges to first floor.				
1269609	MANOR FARMHOUSE INCLUDING ATTACHED WING TO NORTH	Farmhouse. Early C18 with c1800 south block forming principal facade. Red brick, rendered and colourwashed; roof of pantiles and black-glazed pantiles. EXTERIOR: 2 storeys and dormer attic. 3-window range. Corner pilasters. Central 6-panelled and fielded door, the upper 2 panels glazed. 6-vaned fanlight. Timber doorcase with block entablatures and open pediment. One tripartite sash either side with 2/2 and 6/6 unhorned sashes. 2 similar first-floor sashes separated by a 6/6 unhorned simple sash over the doorway. Modillion eaves cornice. Gabled roof with 3 flat-topped dormers fitted with 8/8 unhorned sashes. Internal gable-end stacks east and west. Early C18 range to rear: 2 storeys, 3-window range of C19 sashes. East front with 2 early C18 2-light cross casements to first floor. Gabled roof with ridge stack north of centre. At junction of 2 blocks is an external stepped stack. Running north is a single-storey range of outbuildings: red brick, some flint and pantiled. INTERIOR: stick-baluster staircase with panelled square newel posts. 6-panelled doors to principal rooms of front block. The wing was listed separately 17/10/73.	TF 09048	82267	Grade II	Post-Medieval
1269608	CHURCH COTTAGE	House. c1700. Knapped flint with red brick dressings; pantiled roof. EXTERIOR: 2 storeys. Entrance front faces south: irregular 6-window range of 2-light cross-	TF 09043	82109	Grade II	Post-Medieval

		casements under segmental heads and with brick surrounds. At first floor the windows to left, centre and right are original, remainder C20 replacements. Ground-floor left window is blind and painted in imitation. Central half-glazed C20 door under hood. Gabled roof with internal gable-end stacks east and west, the latter of c1700. North return is a 5-window range of 2-light renewed cross-casements. Rebuilt wall stack in centre. Part-glazed door and single-storey extension to right. West gable has diaper brickwork and a panel under stack of moulded brick representing crossed keys of St Peter. INTERIOR: not inspected.				
1269612	TOWN POUND	Town pound. c1730, restored 1978. Whole and cut flints with brick quoins and dressings. Rectangular on plan. Entrance to east, fitted with C20 timber gate. No roof.	TF 09049	82095	Grade II	Post-Medieval
1269605	CRANGLEGATE	House. c1740. Red brick; roof of black-glazed pantiles. EXTERIOR: 2 storeys and dormer attic. 9-window range, the window to left on each floor blind. Central 6-panelled and fielded door under a 6-vaned fanlight. Panelled reveals. Doorcase with block entablatures supporting open segmental pediment. Fenestration of 6/6 unhorned sashes, those to ground floor under gauged skewback arches, to first floor with gauged segmental arches. Platband at first floor. Saw-toothed eaves cornice. Gabled roof. 4 flat-topped dormers fitted with 3/3 horned sashes (that to right without horns). Internal gable-end stack to west. Single-storey bay attached to east return with a half-glazed door. Rear elevation with 2 stacks on wall plane, and a 2-	TF 09076	81978	Grade II	Post-Medieval

		storey extension. INTERIOR: not inspected but likely to be of interest.			
1269611	STABLE BLOCK AND CART SHED NORTH WEST OF MANOR FARMHOUSE	Stable block and cart shed, partly converted to residential use. Cart shed to north-west early C19, remainder mid C19. Flint with brick dressings. Pantiled roofs. Cart shed partly rendered. EXTERIOR: Cart shed 1-2 storeys. Nearly symmetrical composition of a single-storey central carriage house in a 5-window range flanked by taller stable block at south-east and cart shed to north-west. Central block with central double carriage doors with two 3-light late C20 casements to right and 3 to left. Gabled roof. Stable block entered through a central timber door flanked by a 6-paned C19 window right and left. 2 Diocletian windows above. Dentil eaves cornice. Gabled roof. Hay-loft doorway in gable head. Cart shed to north-west is 3 bays, fitted with double timber doors (doors to left bay missing). Gabled roof. Hay-loft doorway in gable head with a louvred vent light either side. INTERIOR: stable block with timber and cast-iron stall guards, and hay racks.	TF 82253 09088	Grade II	Modern
1269579	GEORGE HOTEL	Hotel. Early C18, main range to street added c1860, extensions 1979 and 1988-89. Red brick, the front rendered and whitewashed. Slate and pantiled roofs. EXTERIOR: C19 facade faces south-west. 2 storeys and dormer attic; irregular 5-window range. Rusticated ground floor. Double-leaf half-glazed door right of centre with plain doorcase rising to pediment. Fenestration of 2/2 horned sashes of various sizes, those to ground floor with rendered and painted	TF8200609096	Grade II	Post-Medieval

		gauged arches, to first floor with raised surrounds and hoods. 5 through-eaves dormers with open segmental pediments with shell motifs; 2/2 horned sashes. Gabled roof. Internal gable-end stacks north and south. To left is C18 block with facade rebuilt in C20 in stretcher-bond red brick: 2 storeys, 5-window range. 6/6 sashes, those to upper floor without horns. Gabled roof. Internal gable-end stack to north. Rear of this block of early C18 brick and one 2-light cross-casement. INTERIOR: C19 cast-iron staircase.			
1269610	BARN AND STOCK HOUSES WITH ENCLOSING WALL NORTH WEST OF MANOR FARMHOUSE	Barn with 2 attached stock houses. Dated 1797. Flint with random brick and brick quoins. Pantiled roofs. EXTERIOR: 5-bay barn with 2 full-height opposing doors to each side, partly replaced with corrugated iron. Slit ventilation lights. Dentil eaves cornice. Gabled roof. Outshut against south gable wall. Stock houses both single-storied, with hipped roofs. North range has weatherboarding to south face. South range with 8 bays of open stock shelters. INTERIOR: barn roof of tie beams and 2 tiers of purlins. Internal brick partitions. Enclosing brick wall runs SE from outshut of barn, returning to form closed yard with stock houses.	TF 82203 09119	Grade II	Post-Medieval
1269580	EVERSLEY HOUSE	House, now part surgery. Early C18, refronted c1770, refurbished c1820, altered late C20. Red brick, slate roof. EXTERIOR: facade of 2 storeys in 5-window range. Central 6-panelled door under 5-paned fanlight. Doorcase with 2 fluted pilasters, block entablatures and open dentilled pediment. Panelled reveals and arched soffit. Fenestration of 6/6 unhorned sashes under gauged skewback arches. C20 fascia board to	TF8197909117	Grade II	Post-Medieval

		eaves. Gabled roof with internal gable-end stacks north and south. To right of elevation an addition of c1780: 2 storeys, 2-window range. Two 6/6 unhorned sashes as before to ground floor, no first-floor openings. Hipped roof. 4-panelled door in additional bay to right, set within a timber doorcase. Rear with 2-storey early C18 cross wing with a first-floor platband and C19 6/6 unhorned sashes. INTERIOR: stick baluster staircase with ramped handrail, c1820.			
1269581	12, STATION STREET	House, formerly used as shop. Early C19. Rendered and colourwashed brick. Pantiled roof. EXTERIOR: 2 storeys and dormer attic. 2-window range. Facade with 2 full-height canted bay windows fitted with 1/1 and 2/2 C20 horned sashes. Ground-floor bays entirely of late C20 replacing former shop display window. Central door blocked. Gabled roof with 2 flat-topped dormers fitted with 2-light casements. Stacks removed. Full-height rear outshut with C20 details. INTERIOR: not inspected. Converted to shop late C19, converted back to house 1980s.	TF8197509144	Grade II	Modern
1269582	14, STATION STREET	Shop. Painted brick; roof of black-glazed pantiles. EXTERIOR: 2 storeys in 3-window range. Early C20 shop display window with glazing bars and a half-glazed door to the left, both under continuous fascia board and hood. Three C20 6/6 horned sashes to first floor under segmental heads. Platbands at first floor and at attic level. Dentil eaves cornice. Gabled roof. Stacks removed. Tumbling in gable heads. INTERIOR: no features of special interest noted.	TF 81976 09152	Grade II	Post-Medieval

1269583	FINCHAM HOUSE	House. Early C18, refronted c1830. Red brick. Pantiled roof. EXTERIOR: 2 storeys and dormer attic. 3-window range. Pilaster strips to right and left of elevation. Central 4-panelled door, the upper 2 panels glazed. Reeded doorcase with reeded consoles supporting hood. One 2/2 horned sash to left under gauged skewback arch. Late C19 canted bay window to right fitted with 1/1 and 2/2 unhorned sashes. Three 2/2 horned sashes to first floor under gauged skewback arches. Dentil eaves cornice. Gabled roof. 2 flat-topped dormers, each with a 2-light casement. Internal gable-end stacks north and south. INTERIOR: not inspected but likely to be of interest.	TF8199209161	Grade II	Post-Medieval
1077307	SUNDIAL APPROXIMATELY 5 METRES SOUTH OF SOUTH EAST QUOIN OF NARFORD HALL	Sundial. C19 replica of early C18 structure.	TF 76686 13710	Grade II	Modern
1169686	CLOCK TOWER, ORANGERY AND CONNECTING WALLS AT NARFORD HALL	Clock tower, orangery and connecting walls. Probably c.1860 by Andrew Fontaine. Ashlar. Clock tower surmounted by arcaded cupola. 7-bay orangery of large casement windows beneath semicircular arches with Baroque decoration. Centre bay slightly larger with rusticated reveals. Balustrade parapet. Roof not visible. Stone connecting walls. Minimal description due to lack of access.	TF 76706 13746	Grade II	Modern

1077275	HEADSTONE APPROXIMATELY 12 METRES NORTH OF CHURCH OF ST GEORGE	Headstone. C18. No visible inscription. Limestone. Carving of a winged and draped putto in high relief holding a cartouche. Flanking carvings of a wreath and plants.	TF 14333	81005	Grade II	Post- Medieval
1077277	SOUTH ACRE HALL	Farmhouse. Late C16 and later. Brick replacing a timber frame; flint with brick dressings; pantile roofs. Earlier blocks form L plan to south and west. Additions to north from C18 to C20. 2 storeys with attics. C20 fenestration consisting mainly of sash windows with glazing bars beneath segmental arches. Fragments of timber frame surviving to west side. Principal facade to east with a flint and brick ground floor and brick first floor. One surviving stud of former frame and 3 bays of C20 sash windows with glazing bars. Modern panelled door to southern bay. Fine, partially rebuilt, axial stack with 4 octagonal shafts. Northern additions not of special interest.	TF 14336	80698	Grade II	Post- Medieval
1077276	OLD RECTORY	Former rectory. Late C18 and later. Brick, re-used limestone ashlar, knapped flint and gault brick. Flat roof to front block, pantiles to rear. 2 storeyed front block. 3-bay symmetrical facade with 2 full height bays, segmental in plan, with tripartite sash windows with glazing bars beneath rendered skewback arches. Centre bay with a 2-leaf panelled front door beneath a traceried semicircular fanlight and within a doorcase consisting of a pair engaged reeded Roman Doric columns supporting a renewed broken pediment. Single sash window with glazing bars at first floor	TF 14391	81048	Grade II	Post- Medieval

		beneath a rendered skewback arch. Parapet with stone coping. East facade. Later canted bay to side of front block with 6 sash windows with glazing bars (one blind) beneath gault brick skewback arches. Middle bay consists of gable- end of rear block which has a datestone (1841) at base of gable. The fabric is of galletted flint with re-used ashlar and gault brick dressings. 3 storeys and 2 bays of sash windows with glazing bars beneath skewback arches. Gable with tumbling-in. Lower additions to north with a 2-storey canted bay and sash windows with glazing bars. West facade has sash windows with glazing bars, a pedimented doorcase on pilasters and outbuildings projecting westwards forming a courtyard. Interior. Original swept staircase with square sectioned balusters open string and mahogany handrail.			
1077663	ST THOMAS A BECKET'S CHAPEL	Site of Chapel of St Thomas a Becket. Medieval. Flint rubble footings only of rectangular chapel.	TF 78809 14824	Grade II	Medieval
1077683	ABBEY COTTAGE	Cottage. Perhaps C15 east gable, C19 cottage extension. East gable has fine plinth of chequered flushwork. Squared clunch blocks with squared knapped flint, rubble and knapped flint above. Cottage of flint rubble, brick extension at west. Red pantiled roof. 3 windows, 2 storeys. East gable embrassure of large window, stone jambs, C18 and C19 pointed arch head in brick, blocked with knapped flint. Stone quoins. Cottage has 3 ground floor windows, one C19 Holkham Estate cast-iron 3-light casement, 3 first floor windows, 2 C19 cast-iron 2-light casements. Low pitched roof with one ridge and one west end stack.	TF 81518 15042	Grade II	Medieval

		Gable perhaps that of C15 chapel on this site indicated by C18 maps references to Almoner's Garden or Chapel Close.			
1171823	THE MILL HOUSE	Mill House. c.1800. Red brick, red pantiled roof. 3 storeys, 5 bays. 4 ground and 5 first floor arched wooden framed plate glass sashes with single glazing bars division. 5 second floor straight headed plate glass sashes with single glazing bar division. Central pedimented doorcase and panelled door. First floor plat-band. Parapet, gables, and 3 bays to east and details replaced after fire c.1959. Double pile wings at south. Return at south-west has coursed, squared carstone blocks, smut and red pantiles. 2 storeys, 3 bays. 2 ground and 3 first floor sashes with glazing bars, brick rustication and flat arches. Central wooden doorcase, fluted arched surround, 6 panel raised and fielded door with glazing bar fanlight. Second pile at east rebuilt.	TF 78906 14970	Grade II	Modern
1171525	WILLOW COTTAGE	House. Dated 1735, perhaps on earlier core. Knapped flint rubble north face, coursed squared knapped flint west gable, brick dressings, red pantiled roof 2 storeys. 5 windows. Ground floor has 2 outer sashes with glazing bars, 2 central canted C20 windows. Boarded door with flush gabled architrave. 5 first floor 2-light casements with glazing bars, brick aprons, rustication and cambered arches. Brick quoins. West gable has attic level brick plat-band, tumbling, plaque with initials MJM 1765. Steeply pitched roof with one east party wall and one west gable end stack.	TF8162515094	Grade II	Post-Medieval

1077690	ABBOT HOUSE	2 cottages, now in one occupation. C18. Brick north front, flint east gable, red pantiled roof. 2 storeys. 3 windows. One ground floor sash window with glazing bars, 3 first floor 2-light casements with glazing bars. One ground floor 6 panel door, 4 upper panels glazed, inserted in former window opening. One c.1900 4 panel door, 2 panels glazed. Roof hipped at east. Included for group value with Willow Cottage attached at west.	TF8163615099	Grade II	Post-Medieval
1253437	K6 TELEPHONE KIOSK	Telephone kiosk. Type K6. Designed 1935 by Sir Giles Gilbert Scott. Made by various contractors. Cast iron. Square kiosk with domed roof. Unperforated crowns to top panels and margin glazing to windows and door.	TF8166015127	Grade II	Modern
1077689	NUMBERS 1-3 BAILEY GATE COTTAGES AND HILL COTTAGE	Terrace of 4 cottages. Early C19. Knapped flint rubble, gault brick dressings, red pantiles. 4 2 storey, 2 bay cottages. 4 ground and 4 first floor wooden framed sashes with glazing bars, 2 first floor blank plastered window openings. 3 6 panel doors, 4 upper panels glazed, one C20 inserted part glazed door to Hill Cottage. All openings have flush gault brick rustication, cambered arches. Brick corbelled cornice, 2 eaves stacks. Included for group value with the Bailey Gate attached at east (q.v.).	TF8172215141	Grade II	Modern
1171492	THE OSTRICH PUBLIC HOUSE WITH ATTACHED COTTAGE AT EAST	Public house. C18 and C19 front on earlier core. Flemish bond red brick, red pantiles. Rubble flint with brick dressed west gable. 2 storeys, 5 windows, 2 wings at right angles at rear. 3 ground and 3 first floor irregularly spaced 3-light C19 Holkham estate cast-	TF8166015145	Grade II	Post-Medieval

		iron casements with glazing bars under cambered arches. 2 blocked first floor windows. b,1900 off-centre door with 2 arched upper glazed lights, rectangular fanlight. Off-centre boarded door carriage entrance. First floor plat-band. End gable first floor moulded kneelers suggesting line of earlier jettied first floor. 3 attic gabled 2-light cast- iron casement dormer windows. Eaves kneelers, brick coped parapets with 2 end gable stacks. Carriage entrance has 2 chamfered stopped transverse beams, crude joists,2 storey flint wing at west. 2 storey brick wing at east has exposed through purlin roof with wind bracing. 2 window 2 storey cottage attached at east, c.1900 details.			
1077662	REMAINS OF RANGE 5 METRES SOUTH OF BARN 100 METRES SOUTH WEST OF ABBEY FARMHOUSE	Remains of domestic or farm building. Medieval. Flint. Half gable at north, full gable at south. Perhaps part of former west or farm court of Priory of St. Mary and All Saints. Scheduled Ancient Monument, County Number 170. See F.H. Fairweather and H.L. Bradfer-Lawrence 'The Priory ... West Acre' Norfolk Archaeology XXIII, 1929,pp.359-394 (ref.p.380).	TF7804315011	Grade II	Medieval
1171519	ALBERT VICTOR PUBLIC HOUSE	Public house. C18. Plaster render on brick, red and black glazed pantiles. 2 storeys, 3 windows. 3 ground and 3 first floor C20 replacement sashes with glazing bars. Simple wooden pilaster strip doorcase with console brackets and gable pediment. Arched embrasure, good glazing bar fanlight. c.1900 door with glazed roundel with lettering. One axial and one east end stack.	TF8170215175	Grade II	Post-Medieval

1171741	REMAINS OF THE CHAPTER HOUSE 50 METRES EAST OF ABBEY FARMHOUSE	Remains of Chapter House of Priory of St. Mary and All Saints. C12, Norman, re-built in C13 after fire of 1286 and vaulted c.1300. Flint, some stone dressings. Angle only surviving. Scheduled Ancient Monument, County Number 170. See F.H. Fairweather and H.L. Bradfer-Lawrence 'The Priory .. Westacre', Norfolk Archaeology, 1929. XXIII, 1929, pp. 359-394.	TF7818115151	Grade II	Medieval
1268139	WESTERN HOUSE	House. Late C17, remodelled and extended C19. Gault brick front and red brick and flint with C20 tile roof and brick ridge stacks. 2 storeys; 2-window range of 8/8 unhorned sashes under wood lintels to 1st floor and gauged brick lintels to ground floor. Plinth, storey band and dentilled eaves. Entrance in lean-to extension to right end. INTERIOR. Ground floor has bridging beams with ogee and notch stops to chamfers. Heavy joists laid flat with wide boards above. First floor has fireplace with brick basket arch, and on wall to left a panel of decoration with foliage, birds and sunbursts in various colours. Attic has similar small fireplace, now blocked, and 4-bay roof with 2 tiers of butt purlins and upper collars, some lower collars removed.	TF 81709 15522	Grade II	Post-Medieval
1077687	THE STONE BARN	Barn. C18. Coursed flint and clunch rubble, red brick dressings, red pantiles. 3-stead threshing barn, converted to domestic use. West face has 2 north and 4 south brick dressed ventilation slits, one blocked arched window. Central cart entrance blocked. Stone angle quoins. South gable has 3 ground and 3 apex brick dressed ventilation slits, brick tumbling.	TF8163515607	Grade II	Post-Medieval

1077688	15 AND 16, ST JAMES'S GREEN	Pair of cottages. c.1600 to south, C19 to north. Cottage to south knapped, squared flint, to north flint rubble, brick dressings, red pantiled roofs. 2 storeys. To south 2 ground floor windows, one 3-light one 2-light, 2 first floor 2-light windows, all C19 Holkham estate cast-iron casements with glazing bars. One first floor partially blocked C17 long and low window, one blocked fire window, brick rustication. One ridge party wall stack, one end stack on C19 south gable. Cottage to north has one ground floor 3-light and 2 first floor 2-light C19 cast iron casements with glazing bars. Details identify as former Holkham estate cottages.	TF8172315622	Grade II	Post-Medieval
1077684	12 AND 14, HIGH STREET	Row of cottages, now in single occupation. C18. Flint plinth, red brick walls, red pantiled roof. Single storey, 4 windows to east, 2 storey with attics at west. Range to east has 2 3-light and one 2-light C19 Holkham Estate cast-iron casements, one 2-light casement. Boarded door. All openings under cambered brick arches. 2 storey range at west has 2 ground and one first floor 2-light wooden casements with glazing bars. Dentil eaves cornice. 3 dormer windows with 2-light cast-iron casements. Steeply pitched roof outer with 2 end and one ridge stacks. Single storey with attic extension at east has one ground floor 3-light and one 2-light cast-iron casement under cambered brick arches. One dormer 2-light cast-iron casement. Details identify as former Holkham Estate cottages.	TF8178515185	Grade II	Post-Medieval
1305459	ABBEY FARM HOUSE	Farmhouse. C18, c.1900 additions and details, possibly incorporating earlier core of monastic remains	TF 78114 15136	Grade II	Post-Medieval

		<p>of Priory of St. Mary and All Saints. Red brick, slate roofs. 2 storeys, of 3 or more builds. 2 window range at east, 2 window returned gable wing off centre, 2 window centre, 2 window c.1900 addition at west. Garden front east range has one ground floor and 2 first floor sashes with glazing bars, one ground floor French door. Returned wing has one ground and 2 first floor sashes with glazing bars, one part glazed door. Centre has one c.1900 ground floor canted bow addition with 3 plate glass sashes, one first floor tripartite and one single sash with glazing bars. One part glazed door. c.1900 addition at west has one ground and. one first floor sash with glazing bars. Hipped gabled advance bay with one ground floor c.1900 canted bow addition with 3 plate glass sashes, one first floor Venetian window with sashes with glazing bars under rubbed arches. c.1900 wooden modillion eaves cornice. One east, one south, one west end gable stacks, one ridge stack, all diamond pattern shafts of c.1900. East range rear has outshut root. Second pile at rear centre with reused masonry west gable.</p>			
1305493	THE WOODEN HOUSE	<p>House, now offices, with post office attached at north. C16 details largely 1982. Flint and stone and clunch rubble plinth, weather-boarded timber frame, thatched roof 2 storey Wealden-house play with central 2 storey open-hall, advanced 2 storey east and west wings. South front has recessed hall with one ground floor 3-light and 2 first floor 2-light 1982 replacement casements. Off-centre door in line of tower screened passage. Jettied eaves with single bracket. West wing</p>	TF 77998 15269	Grade II	Post-Medieval

		<p>with jettied first floor with single ground and first floor 1982 replacement 2-light casements. Jetty supported with C20 posts and lintel. North face has 2 ground floor casements with 3 diamond section wooden mullions, one casement cross windows all 1982 replacements. 2 bracket support jetty on west, dragon-beam at south-west angles. First floor with single 2-light casement. South wing has one ground floor 1982 replacement cross window, jetty supported with single C20 angle post. East face has 2 casements, each with 3 diamond section mullions. All external wooden details of 1982. Steeply pitched thatched roof with off axis stack, 1982 rebuilding. Interior: 2 storey open hall, former floor removed 1982. Central arch braced tie beam with reported evidence of tower Crown post roof. West tie beams survives as arched brace at south only, east tie beam as arched brace at north only, cut off by inserted hall stack. Stack, largely rebuilt 1982, has chamfered stop bressumer at west, crude stopped bressumer at east with right angle moulded transverse beam. 2 storey brick C19 range at north-west, single storey addition at north-east.</p>			
1306361	REMAINS OF CROSS APPROXIMATELY 20 METRES NORTH OF CHURCH OF ST GEORGE	<p>Cross shaft and base. Probably C14. Limestone. Octagonal shaft with alternating flat and concave sides. Crocket stops. Set onto trough-like base with remains of corner spurs.</p>	TF 81002 14345	Grade II	Medieval

1342390	THE OLD TEA SHOP	Row of cottages, forming shop and one cottage. C18. Flemish bond red brick, red pantiles. 2 storeys, 5 windows. 3 ground floor windows under cambered arched, 2 outer sashes with glazing bars, central inserted replacement C20 plate glass window. Inserted C20 bowed shop window. 2 boarded doors with glazed upper lights. 2 first floor outer sashes with glazing bars, 2 inner blocked plastered windows, one central C20 plate glass window insertion, on original opening. Attic dentil eaves cornice. One ridge and one north end gable external stack with set offs.	TF8168815162	Grade II	Post-Medieval
1342410	REMAINS OF DOMESTIC RANGE 140 METRES SOUTH OF ABBEY FARMHOUSE ACROSS RIVER NAR	Remains of detached domestic range of Priory of St. Mary and All Saints. Medieval, perhaps C14 and C15. Rectangular, 2 storey range. Flint, clunch, brick dressings. Possibly the theological school or "Schools for Sons of Gentlemen" mentioned in contemporary documents. Scheduled Ancient Monument, County Number 170. See F.H. Fairweather and H.L. Bradfer-Lawrence 'The Priory ...Westacre', Norfolk Archaeology, XXIII, 1929, pp. 359-394 (ref. p. 380-384).	TF7816815000	Grade II	Medieval
1439039	West Acre and District War Memorial	DESCRIPTION: the war memorial comprises an ornate fleur-de-lis wheel-head cross on a tapering square shaft. The shaft rises from a square plinth on a round two-stepped base. The first step is formed from four splayed stones. The whole stands on a round sloping base of flints.	TF7801315231	Grade II	Modern

1440879	Castle Acre and Newton War Memorial	DESCRIPTION: Castle Acre and Newton War Memorial is located within the churchyard of St James the Great Church. It consists of a wheel-head cross with a Sword of Sacrifice carved in relief on its front face. The cross is set upon a tapering shaft which rises from a trapezoid-shaped plinth. The whole stands on a two-stepped base.	TF8161115094	Grade II	Modern
1269542	WHITE LION INN	Shop, now public house. Late C17, refronted and altered c1860, converted to public house late C20. Flint and brick with red brick facade. Roof of black-glazed pantiles. EXTERIOR: 2 storeys and dormer attic; 3-window range, with additional, lower, window bay to left. Central 6-panelled door, the upper 2 panels glazed. Simple timber doorcase. To left is shop display window with central double-leaf doors and hood on consoles. One boarded window to right. Three 2/2 horned sashes each floor above, the upper ones within through-eaves dormers. Gabled roof. Internal gable-end stacks. Left-hand bay with one 2/2 horned sash each floor and a bell-cast gabled roof. North return with remains of lower roof line and datestone relocated: 1682. INTERIOR: not inspected.	TF 81974 09168	Grade II	Post-Medieval
1269541	17, 17A AND 19, STATION STREET	Shown on OS map as No.19. House, now shop. c1830, converted to shop late C20. Rendered and colourwashed brick. Pantiled roofs. EXTERIOR: facade of 2 storeys in 3-window range. C20 central glazed door within timber doorcase with frieze and hood. C20 glazed door to right of elevation. 2 C20 plate-glass shop display windows. First floor with three	TF8199009178	Grade II	Modern

		1/1 unhorned sashes. Gabled roof. Ridge stack left of centre and truncated internal gable-end stack to south. 2-storey rear cross wing fitted with casements and sashes. INTERIOR: no features of special interest noted.			
1269543	21, STATION STREET	House. Early C19. Red brick, pantiled roof. EXTERIOR: 2 storeys in 2-window range. 4-panelled door to right within timber doorcase with hood. One 6/6 unhorned sash to left under gauged skewback arch, and 2 similar sashes to first floor. Gabled roof. Rebuilt internal gable-end stack to north. INTERIOR: not inspected. Listing NGR: TF8199009186	TF8199009186	Grade II	Modern
1269544	ORWELL HOUSE	House. c1740. Front block added 1820. Red brick, pantiled roof. EXTERIOR: 2 storeys in 5-window range. Central 6-panelled door with 5-paned fanlight. Doorcase with pilasters, block entablatures and open pediment. Panelled reveals and soffit. Fenestration of 6/6 unhorned sashes with gauged skewback arches and late C20 secondary external glazing. Platband at first floor. Dentil eaves cornice. Gabled roof with internal gable-end stacks north and south. Tumbling in gable heads. Rear wing of 2 storeys and dormer attic. INTERIOR: not inspected.	TF8197409192	Grade II	Post-Medieval
1269545	GLAISDALE	House. c1770. Red brick; pantiled roof. EXTERIOR: 2 storeys. 5-window range. Centre bay broken forward. 6-panelled door, the upper 2 panels glazed, set within panelled reveals. Timber pilaster doorcase with pediment. Two 3/3 unhorned sashes right and left under gauged skewback arches. Platband at first floor.	TF8199009194	Grade II	Post-Medieval

		Four 6/6 unhorned sashes to first floor, with gauged skewback arches. Modillion eaves cornice. Gabled roof with an internal gable-end stack to south and a ridge stack left of centre. North gable with Venetian window to first floor fitted with 1/1 sashes. INTERIOR: Venetian window has 2 fluted Doric columns. 4-panelled doors, eared fire surround to ground-floor north room, moulded cornices. Stick-baluster staircase with ramped and wreathed handrail.			
1269547	BOUNDARY WALLS TO EAST AND NORTH OF NUMBERS 24 AND 26	Boundary walls. Early C18. Whole flints with brick piers at intervals and C19 brick capping. Walls swept up at north and south ends, and return west from north end, here of C19 brick.	TF8197609214	Grade II	Post-Medieval
1269573	BEECH HOUSE	House. Mid C18, extended c1910. Brick, stuccoed to south; roof of black-glazed pantiles. C18 south block with parallel north block added later. EXTERIOR: 2 storeys and dormer attic. South front has a 2-window range. Canted window bay to ground floor added c1910 to left of a 2/2 unhorned sash. Two 3/6 unhorned sashes to first floor. Modillion eaves cornice. Hipped roof with 2 flat-topped dormers fitted with 4/8 unhorned sashes. Ridge stack and a stack on west roof slope. North block projects to west: in the entrant angle is a 2-storey projection of c1910 lit through casements at first floor with glazing bars. To left of this at first floor is a rounded bay window with casements with glazing bars. North front is a 4-window range. Central 6-panelled and fielded door within timber doorcase consisting of fluted pilasters carrying an	TF 82017 09263	Grade II	Post-Medieval

		open segmental pediment. Fenestration of segmental-headed 8/8 unhorned sashes. Modillion eaves cornice and hipped roof in which are 2 flat-topped dormers, the left one with two 2/4 horned sashes, the right with one 4/8 horned sash. Stacks on east and west roof slopes. INTERIOR: C18 open-string staircase with bobbin-turned balusters and a ramped and moulded handrail. Upper staircase hall has a wide barrel-vaulted plaster ceiling lit by tripartite casements at east and west ends: panelled pilasters to wall continue as ribs into the vault; egg-and-dart cornice.				
1269548	POINT HOUSE	House. Dated 1788. Red brick. Roof of black-glazed pantiles. EXTERIOR: 3 storeys in a 3-window range. Central 6-panelled and fielded door, the upper 2 panels glazed. 2 fielded panels over door within timber doorcase and hood rebuilt C20. One 3-light C19 cross casement right and left under segmental heads; 2 similar first-floor casements flanking a blind central window; second floor with two 3-light casements and a 2-light central casement. Brick modillion eaves cornice. Gabled roof with gable-end stacks east and west, the latter partly external. Contemporary full-height outshut to rear with one raking dormer. East gable head with datestone: 1788. INTERIOR: not inspected.	TF 09264	81994	Grade II	Post-Medieval
1169833	LITTLE PALGRAVE HALL	Farmhouse. C17 gable-ends, C18 facade refurbished in early C19. Brick facade; flint, brick and re-used ashlar gable-ends; black and red pantile roofs. Lower service extensions to rear of main block. 2 storeys with attic. Symmetrical facade of 3 bays of sash windows	TF 13471	83252	Grade II	Post-Medieval

		with glazing bars beneath segmental arches. (Ground floor windows formerly much wider). Central recessed porch in stucco with a pair of square columns in antis supporting a plain entablature. 2 narrow sash windows above. Central gabled dormer with stone coping and a sash window beneath a semicircular relieving arch. C17 returned gable-ends with rebuilt gables in brick. 4 sash windows to western gable-end and some evidence of the original first floor opening. C19 single-storeyed canted bay to east gable-end with 2 sash windows above. Considerable quantities of re-used limestone ashlar probably from Castle Acre priory. Both gables with stone copings and decorative peak finials. Pair of stacks to rear wall. C18 and C19 service extensions. C19 staircase with turned balusters, open string and swept mahogany handrail.			
1077682	63 AND 64, BAILEY STREET	House. Late Medieval with extensive C18 and C19 additions not of special interest. Flint with brick headers to main fabric. Limestone ashlar dressings. Pantile roof. Returned gable-end wall with former exterior face to north now obscured by later structures to both sides. Western return forms part of street facade. Plinth with chamfered ashlar coping. Small rectangular window with chamfered reveal. Interior: entire length of gable-end and an eastern return (identical to the western one) visible from interior. Building to south probably replaces a Medieval timber-framed structure.	TF8189814939	Grade II	Medieval

1077686	BARN 25 METRES EAST SOUTH EAST OF TUDOR LODGINGS	Barn, probably a former dwelling. C16 and later. Coursed flint with keyed brick dressings. Pantile roof. Rectangular in plan with single storeyed lean- to to north gable-end. One storey. Redundant lower courses of a former window reveal suggest that the building has been lowered and that it was originally storeyed. One window and 2 doorways to west. One doorway to east. Shallow roof of C18 or C19. Interior: 2 niches in south wall with 4-centred arches. Included for group value.	TF 14967	81837	Grade II	Post-Medieval
1342388	DOVECOTE 25 METRES SOUTH EAST OF TUDOR LODGINGS	Former dovecote. C16. Major repair 1880 according to inscribed plaque to rear. Second important repair late C20. Knapped and galletted flint with keyed brick dressings. Some clunch; pantile roof. Square in plan. One full height opening off-centre to north. Former diagonal buttress to south-east corner. Pyramidal roof topped with a modern lantern. Interior: mutilated nesting boxes formed of brick and clunch.	TF 14949	81821	Grade II	Post-Medieval
Conservation Areas with 2km:						
	South Acre	Designated as a Conservation Area 25th November 1991. No Conservation Area Appraisal available	TF 15175	81685	Conservation Area	
	Castle Acre	First designated in April 1971. Castle Acre is a village of contrast with old cottages, open village greens, mature trees, enclosed spaces, narrow streets and sunken lanes. It's antiquity is very evident in the way that the village fabric is imposed onto and around the 12th Century castle precinct, with the remains of the	TF 14375	80920	Conservation Area	

		Cluniac Benedictine Priory standing a short distance away, beside the river on the side of the valley. These two great scheduled ancient monuments, cared for by English Heritage, contribute significantly to Castle Acre's outstanding conservation area.			
	Swaffham	No Conservation Area Appraisal available	TF 08990	82025	Conservation Area



THE DROVES
SOLAR FARM

Appendix 8.2

Gazetteer of HER Data

1 Appendix 8-2: Gazetteer of Historic Environment Record Monuments and Events

1.1 Introduction

1.1.1 The following table provides details of heritage assets recorded on the Norfolk Historic Environment Record within 1km of the study site. These have been listed in order of their HER references, and their locations are marked on Figure 8-2.

Ref.	Name	Description	NGR	Designation	Period
Norfolk HER 'Monument' Records:					
MNF1058	Multi-period finds from Great Palgrave deserted medieval village	Extensive fieldwalking and metal-detecting between 1973 and 2022 recovered Late Saxon to medieval pottery sherds; Late Iron Age, Roman, Late Saxon and medieval coins (including 12 rare Saxon pennies and a scattered medieval hoard of 47 silver coins); medieval and post-medieval jettons; medieval and post-medieval tokens and a range of other, undatable and Middle Bronze Age to post-medieval metal objects. These metal finds include undatable metalworking debris, a copper alloy casting jet and copper alloy ring; a Middle Bronze Age small socketed spearhead and rapier or dirk fragment; a Middle/Late Bronze Age spearhead fragment and copper alloy dagger or knife; a Middle Iron Age brooch; a Late Iron Age/Roman brooch; Roman brooches, a bracelet fragment, strap fitting, military harness mount, copper	Not displayed		Middle Bronze Age to 19th Century

		<p>alloy beads and a copper alloy pin; Early Saxon brooches, a strap fitting and spangle; an Early to Late Saxon strap end; Middle Saxon strap fittings, a brooch and hooked tag; Middle/Late Saxon hooked tags and a silver strap end; Late Saxon strap and harness fittings, finger rings, hooked tags, brooches, strap ends, stirrups, a buckle, furniture fitting, knife-grip mount, ferrule or staff terminal and ingot; a Late Saxon/medieval zoomorphic brooch and sword-scabbard chape; Late Saxon to post-medieval lead spindle whorls; medieval to post-medieval dress accessories (including a tiny medieval buckle); medieval spur buckles, furniture fittings, harness fittings, harness mounts, harness pendants, casket keys, scabbard chapes, mounts, thimbles, a box/casket hinge plate, chafing dish, hasp, barrel padlock, purse frame, mirror case, balance, hinged book clasp, whittle-tang knife end-cap, copper alloy and seal matrices (including one with a motif depicting a lion fighting a dragon), lead weights, lead spindle whorl, lead pot mend and lead cloth seal; medieval/post-medieval spur rowels, a knife end cap, purse frame fragment, candle holder, coin weight, leash swivel, chafing dish fragment, skillet or cauldron fragment, other copper alloy vessel fragments, copper alloy studs, copper alloy rings and lead weight and post-medieval harness mounts, furniture fittings, book clasps, a spur rowel, Jew's harp, ferrule, silver cockspur, lead alloy toy fragment and lead cloth seals.</p>			
MNF1289	The Peddars Way	A Roman road, visible as an earthwork and cropmark on aerial photographs. Some sections of the road are	TF 82298 12448		Roman

		open to the public as a long distance footpath. The road enters Norfolk at Brettenham, where a possible stretch visible on aerial photographs has been recorded as NHER 54566, and follows a very direct line with only a slight bend at Hockham to the north Norfolk coast at Holme next the Sea, where its original destination has probably been lost through erosion. There may have been a ferry crossing to Lincolnshire, near Skegness. It is likely to be early Roman in date, and was probably of military origin.			
MNF11971	Bronze Age barrow cemetery	A double ring-ditch and four single ring-ditches were identified on aerial photographs of this site taken in 1933. These features are presumed to represent the remains of a Bronze Age barrow cemetery. In 1972 it was found that commercial gravel extraction had destroyed the double ring-ditch and the easternmost single ring-ditch. A third ring-ditch may also have also been lost around this time, although it is possible that it survives beneath the plantation that now lies on this part of the site. The two westernmost ring-ditches were subject to archaeological excavation in 1987-88, prior to the expansion of the quarry. This work confirmed that the westernmost feature was the levelled remains of a large round barrow (NHER 58760). A Bronze Age date for this feature is likely, although little in the way of dating evidence was recovered. The second ring-ditch was found to be a natural feature. See NHER 58760 for further information on the results of this excavation, which also revealed a Saxon inhumation cemetery.	TF 804 146		Bronze Age

MNF14014	Neolithic flint find	A Neolithic flint pick was found at an unknown date.	TF 810 132		Neolithic
MNF14443	Roman metal find	A Roman coin was found in 1968.	TF 806 137		Roman
MNF15001	Arch, Narford Park	An arch is marked at this location on Faden's map of 1797. The arch is now hidden within Eyetrapp Plantation.	TF 772 124		Post Medieval
MNF17561	Cropmarks of undated rectangular enclosure and pottery sherd	An aerial photograph taken in 1981 showed the cropmarks of a rectangular enclosure at this location. No date was assigned to this feature but an investigation of the site recovered a pottery sherd and glass fragment of unknown date	TF 8278 1136		Unknown
MNF18184	Multi-period finds, medieval stonework, undated building remains and timbers	Pieces of re-used medieval architectural stonework and pieces of timber exposed in quarry in 1982. Prehistoric flints (including two possible Palaeolithic flakes) and fragments of Roman, Late Saxon, medieval and post medieval pottery were recovered during a visit to the site. The stonework may have been taken from nearby Castle Acre Priory and incorporated into a later building here.	TF 809 144		Lower Palaeolithic to 19th Century
MNF18343	Possible Bronze Age ring ditch	1984 aerial photography shows the cropmarks of a possibly Bronze Age ring ditch.	TF 802 145		Bronze Age
MNF17687	Undated bank and Neolithic flint finds	An earthwork bank is recorded on a museum map and bricks and Neolithic chipped flint axeheads are said to have been found there. Nothing is visible on recent aerial photographs.	TF 816 143		Unknown

MNF15066	Prehistoric flints, Roman coins, post medieval pottery sherd	Fieldwalking between 1978 and 1979 recovered a number of prehistoric flint tools and a post medieval sherd. Metal detecting in 1980 to 1981 recovered a number of Roman coins.	TF 80 09		Lower Palaeolithic to 19th Century
MNF21996	Old Rectory	Set opposite the church and with splendid views of the ruins of Castle Acre Priory, this is a late 18th century and later former Rectory of brick flint and stone, some of the stone re-used medieval material. The two storey south front has three window bays with two full-height bow windows separated by a door and doorcase of Roman Doric columns under a broken pediment. The east bay and return were added in 1841. Inside is an original swept staircase with a mahogany handrail.	TF 8104 1439		18th Century to 21st Century
MNF24753	Palaeolithic and Roman finds	In 1988 a Palaeolithic flint implement was found on the ground surface here. Metal-detecting in 2022 recovered a Roman coin.	TF 8266 1332		Lower Palaeolithic to Roman
MNF25940	Multi-period scatter finds	Pottery dating from the Iron Age to the medieval period, a medieval buckle and copper alloy cauldron, found by metal detecting.. Middle Saxon pottery.	TF 81 14		Early Iron Age to Medieval
MNF2796	Fen Causeway Roman road	The Fen Causeway is the name given to the Roman road which runs from a junction with Ermine Street and King Street near Peterborough across the Cambridgeshire and Norfolk fens. It was first recorded by Dugdale in 1772. In places the road is known to run along the crest of a roddon of a natural watercourse and is therefore quite sinuous, while straighter alignments may follow an artificial canal. In Norfolk, the Fen Causeway runs between Upwell and Denver,	TF 92398 11250		Lower Palaeolithic to Roman

		<p>but in places there is more than one possible route. East of Denver, the road then probably divides into two, with one route heading due east to the Roman town of Venta Icenorum at Caistor St Edmund (NHER 9786) and the other heading northeast towards the Roman town at Brampton (NHER 1006 and 1124). The upland continuation of the Fen Causeway between Denver and Brampton is included under NHER 2796. In a number of places the road is visible as a cropmark on aerial photographs, whilst in several places it survives as a landscape feature. Sections of the road have been excavated on a number of occasions, revealing a cambered metalled surface and side ditches. At Denver, it is dated to the 1st century AD, and there is evidence of extensive settlement and salt production beside it (NHER 4240). Excavations at Downham West in 1993 examined a complex sequence of deposits, including the roddon of a natural watercourse into which a canal had been dug, probably in the early 2nd century AD. The first road surface was found to pre-date the canal, while a second road surface probably ran beside the canal.</p>			
MNF29538	World War Two bombing decoy	A World War Two decoy airfield, designed to divert enemy bombers away from the real airfield at Marham. It was a 'Q' type decoy, for night-time use, and had mock runway lights. The site's bunker still remains.	TF 7973 1258		World War Two
MNF30473	Narford Park	An early 18th century landscape park included in Campbell's Vitruvius Britannica of 1725. The early 18th century formal layout included a geometric formal	TF 76603 13212		Post Medieval

		garden surrounded by a ha ha, ornamental canals and classical garden buildings, see NHER 4014. An impressive north to south avenue is focused on the south front of the Hall, and runs for over a kilometre. By the late 18th century the formal, geometric gardens had been removed and the planting 'deformalised', and by the end of the 19th century a large lake had been created.			
MNF31883	Prehistoric flint and multi-period pottery sherds	Fieldwalking in this area during 1996 recovered a single prehistoric flint along with sherds of Early Saxon, Late Saxon and medieval pottery.	TF 781 142		Lower Palaeolithic to 19th Century
MNF32248	Bronze Age ring ditch	1992 aerial photography shows the cropmarks of a probable Bronze Age ring ditch.	TF 8048 1422		Bronze Age
MNF32761	Medieval to post-medieval finds	Metal-detecting in 1997 and 2019 recovered a late medieval or early post-medieval cauldron foot and a post-medieval jetton.	TF 82 09		Medieval to 19th Century
MNF33664	Multi-period pottery sherds	Fieldwalking in this area during 1997 recovered sherds of Iron Age, Roman, Early Saxon, medieval and post medieval pottery.	TF 780 141		Early Iron Age to 19th Century
MNF33672	Earthworks of medieval road and multi-period finds	Fieldwalking here in 1998 recorded the earthworks of a medieval road and recovered Iron Age, Roman, medieval and postmedieval pottery sherds. Metal-detecting between 2012 and 2018 recovered a Roman coin, a Roman copper alloy finger ring with an oval bezel and a post-medieval shoe buckle and furniture escutcheon.	TF 78 13		Early Iron Age to 19th Century

MNF38622	Multi-period finds	<p>Extensive metal-detecting between 1997 and 2023 recovered a large and diverse assemblage of finds, including Roman, Late Saxon and medieval pottery sherds; a Roman flue tile fragment; a Roman Hertfordshire puddingstone quern fragment; a postmedieval bone domino; undatable copper alloy metal-working debris; numerous Roman coins (including a coin blank); Late Iron Age, Late Saxon and medieval coins; a medieval jetton; a medieval/post-medieval token and various other, Bronze Age to post-medieval metal objects. These metal finds include an undatable finger ring, crudely-cast copper alloy rings and possible lead weight; a Middle/Late Bronze Age copper alloy awl; a Late Bronze Age spearhead fragment and copper alloy awl; a potentially Bronze Age awl and blade fragment; a Late Iron Age brooch and possible scabbard mount; a Late Iron Age/Roman brooch; Roman brooches, finger rings (one silver), bracelet fragments, terrets, keys, a buckle, button and loop fastener, cosmetic implement, cosmetic pestle, tweezers, a lock pin, harness pendant, harness mount, bell, spoon, knife handle in the form of a solid human bust, zoomorphic mount depicting a lion, phallic mount, copper alloy hairpin, copper alloy bucket foot, copper alloy annular bead, cast copper alloy head of the goddess Minerva, lead weights and iron clamp; a collection of Late Roman military objects; a Roman/Early Saxon pendant (possibly made from Roman coin); a possible Roman furniture mount, copper alloy nails and copper alloy pin; Early Saxon brooches; a Middle/Late Saxon</p>	Not displayed		Early Bronze Age to 19th Century
----------	--------------------	--	---------------	--	----------------------------------

		strap end; Late Saxon hooked tags, an Anglo-Scandinavian strap end, finger ring or earring and lead gaming piece; Saxon to post-medieval lead spindle whorls; medieval to post-medieval dress accessories (including a medieval silver annular brooch and postmedieval gold finger ring); medieval harness pendants, a harness mount, casket key, coin weight, copper alloy seal matrix, lead alloy possible pilgrim badge, lead ampullas and lead weights; a potentially medieval lead pot mend; a medieval/postmedieval finger ring, pin, copper alloy vessel fragments and lead weight and lead weight or spindle whorl and post-medieval coin weights, Jew's harps, a thimble, scale-tang knife fragment, spur, harness mount, candlestick fragment, rowel spur, lead cloth seals and lead weight.			
MNF3953	Multi-period finds	Neolithic and Early Bronze Age flint implements were recovered from the area in 1934 and Neolithic pottery fragments in 1963. Metal-detecting and fieldwalking between 1985 and 2012 have recovered a range of objects including prehistoric flints; pottery fragments from the Neolithic period onwards; Late Iron Age, Roman, medieval and post-medieval coins and metal objects from the Bronze Age and Late Iron Age to post-medieval periods. The coin finds include a Late Iron Age coin hoard comprising four East Anglian silver units (one a plated copy with a copper alloy core). The other metal finds include a Late Iron Age/Early Roman brooch and toggle; Roman brooches; an Early Saxon sleeve clasp and toggle; a Middle to Late Saxon/early medieval hooked tag; Late	Not displayed		Lower Palaeolithic to 19th Century

		Saxon silver bell fragments and medieval dress accessories.			
MNF3984	Possible Bronze Age barrow	A possible barrow is marked on a Norwich Castle Museum record map, but nothing can be seen on the ground today apart from a natural knoll.	TF 792 144		Bronze Age
MNF3963	Roman coin	A Roman coin found in 1950.	TF 773 134		Roman
MNF3965	Roman pottery, coins and a brooch	In 1957 fragments of Roman pottery were found while metal-detecting in 2012 recovered Roman coins and a Roman brooch.	TF 76 11		Roman
MNF3988	Roman pottery finds	Roman pottery fragments were found in 1961.	TF 798 118		Roman
MNF4105	Mesolithic and later prehistoric worked flints	A Neolithic flint arrowhead and a Beaker period barbed and tanged arrowhead were found in this field during the early 20th century. It is thought that this field was the source of a number of Mesolithic worked flints that were found on the land of Hall Farm in 1947 and subsequently donated to the Wisbech Museum. This assemblage includes microliths, scrapers, a burin spall, an axe-sharpening flake and a large number of flakes. It should be noted that this site is close to where another assemblage of Mesolithic worked flints was recovered in 1960 (NHER 3890).	TF 8029 1480		Early Mesolithic to Beaker
MNF4106	Multi-period finds	Various objects found in 1949. Prehistoric worked flints included a Mesolithic microlith, two prehistoric core tools that were recorded as Neolithic but may be Mesolithic and an Early Neolithic flint laurel leaf. Other finds recovered included a Bronze Age copper alloy	TF 8059 1200		Lower Palaeolithic to Early Saxon

		socketed axehead and copper alloy spearhead; Iron Age/Roman and Roman pottery sherds and a ?Saxon bead. It is possible that a Palaeolithic flint handaxe was also recovered in this field, although there is a degree of uncertainty as to whether it was from here or a pit to the north-east (NHER 4099).			
MNF4111	Prehistoric burnt mound	A very large concentration of pot boilers was noted in the corner of a field at an unknown date. The whole field is prolific in surface flint finds.	TF 8084 1186		Prehistoric
MNF4113	Perforated prehistoric stone object of Mesolithic or later date	A Mesolithic or later stone macehead with hour glass perforation was found here at an unknown date.	TF 8103 1440		Early Mesolithic to Early Bronze Age
MNF4096	Castle Acre Priory	The substantial remains of a Cluniac Priory, founded in 1089 and dissolved in 1537. The impressive and important Romanesque façade of the 12th century church survive almost to full height, and the ruins include the remains of the 12th century claustral buildings, as well as the earthworks of other monastic buildings and enclosures.	TF 814 148		Medieval to 19th Century
MNF4118	Roman pottery finds		TF 804 133		Roman
MNF4142	Palaeolithic flint cleaver	Around 1965 a Palaeolithic flint 'cleaver' was recovered from this area.	TF 807 107		Lower Palaeolithic to Middle Palaeolithic

MNF4097	Palaeolithic flint finds	Over 300 hundred Palaeolithic flint objects were recovered from this quarry when it was being worked during the second half of the 20th century. This assemblage includes handaxes, cores and a large number of flakes, and is of a similar composition to that recovered in earlier years from the Bartholomew's Hills pits to the south (NHER 4099). This is an important assemblage due to the presence of Middle Palaeolithic Levallois flakes and cores alongside many cruder, stone-struck flakes. The Levallois pieces are relatively unsophisticated and may date to a time when this technique of core preparation was in its infancy. Although many of the objects recovered remain in private hands a significant number are now held by the Norwich Castle Museum and the King's Lynn Museum.	TF 8016 1478		Lower Palaeolithic to Middle Palaeolithic
MNF4099	Palaeolithic handaxes, flakes and other worked flints, Bartholomew's Hills pits	A significant number of Palaeolithic worked flints were recovered from these gravel pits when they were being worked in the first half of the 20th century. The material recovered includes over 20 handaxes and many flakes, a number of which display signs of secondary working. This is an important assemblage due to the presence of Levallois flakes and cores alongside cruder, stone-struck flakes. Many of the artefacts from this site can now be found in various museum collections, although there is some possible confusion with material that was recovered from the Thorpe Pits to the north (NHER 4097). It is likely that at least some of the poorly provenanced Palaeolithic material from Southacre came from the Bartholomew's Hills pits (see NHER 58863 for details	TF 8173 1333		Lower Palaeolithic to Late Neolithic

		of these finds). It also appears that a small number of Neolithic flints were found during the excavation of these pits.			
MNF4123	Roman metal find	An inscribed Roman copper alloy spoon was found in 1952.	TF 805 110		Roman
MNF4126	St George's Church, Southacre	The oldest parts of this small church are the nave and, inside it, the massive font, both of which are Norman. The chancel is 13th century. In about 1300, the north aisle running into the chancel was made into a chapel and the north and south doors added. After alterations in the 14th century, further extensive work took place in the 15th and 16th centuries, during which time the west tower was rebuilt by the Harsick family, whose coat of arms is set over the elegant west door. Over the same period, the north porch was added, the nave and chancel heightened and new windows and roofs put in place. Unusually, the church seems largely to have escaped restoration in the 19th century. Inside there is far too much of interest to document in a summary. However a selected few items may whet the appetite. The tower screen was made up in the 19th century from pieces of the ornate 14th century rood screen. The Norman font has a restored 16th century cover with an inscription commemorating Geoffrey Baker, a Rector, who died in 1534. There are a number of interesting coffin slabs, including in the aisle a tomb with the figure of a Crusader Knight on it, believed to be of Sir Eudo Harsick, a 12th century crusader There is an exceptionally fine life-size brass of 1384 to Sir John Harsick and his wife who are	TF 8100 1432		Medieval to 19th Century

		portrayed holding hands, a brass to Thomas Leman of 1534 and scanty remains of an armorial brass of 1454 to Sir Roger Harsick. In the chancel is a low tomb recess, in which lies a strange, defaced and decayed wooden effigy, probably a 14th century member of the Harsick family. In the chapel is a magnificent alabaster and marble monument of 1623 to Sir Edward Barkham and his wife. Their recumbent figures lie on the tomb. He holds a book and is wearing over his armour the fur lined robe and chain of office as Lord Mayor of London. On either side of a gruesome panel of broken skulls and bones are the kneeling figures of two sons and three daughters. Fine contemporary iron railings block off the chapel from the aisle. In the churchyard are the remains of a medieval stone cross, consisting of the base of an octagonal shaft on an ornate but weathered base.			
MNF4127	Iron Age or Saxon pottery find	A large piece of Iron Age or Saxon pottery was found in a gravel pit in 1963.	TF 805 148		Early Iron Age to Late Saxon
MNF4144	Hoard of Bronze Age copper alloy rapier blades	Around 1939 a hoard of four Bronze Age copper alloy rivetted rapier blades were recovered from the parish of Swaffham.	Not displayed		Bronze Age
MNF4129	Palaeolithic flint flakes, ?Neolithic flint flakes and Bronze Age pottery	Finds recovered from gravel pits southeast of Bartholomew's Hills including Palaeolithic "Clactonian" flakes and a sherd of Bronze Age pottery. In 1986 two flint flakes of either Palaeolithic or Neolithic date were recovered	TF 8223 1289		Lower Palaeolithic to Late Bronze Age

MNF4154	Prehistoric mounds	burnt	Concentrations of pot boilers and blackened earth were noted in this area in 1949.	TF 8074 1171		Prehistoric
MNF4157	Undated earthworks, Bartholomew's Hills		The approximate site of earthworks known as 'Oliver Cromwell's Camp'.	TF 8168 1302		Unknown
MNF4160	Old Hall moated sites	medieval	Two adjacent but distinct medieval moated enclosures, believed to be the site of South Acre manor, held by the Harsick family from the 12th century until 1454. The enclosures are situated south of the River Nar, north of which is the precinct of Castle Acre Priory, of which the Harsicks were benefactors. Both the moated sites contain the visible remains of substantial masonry structures, believed to be at least two successive manor houses and ancillary buildings. The remains of a rectangular building between the moated sites are thought to be a free chapel founded by the Harsicks for their private use.	TF 8118 1459		Medieval
MNF4163	Southacre Hall		A late 16th century and later two storey timber framed farmhouse, faced with flint and brick. The earliest parts are to the south and west, where fragments of the timber frame survive. The northern additions are 18th to 20th century. The fine chimney stack has four octagonal shafts.	TF 8074 1432		Post Medieval
MNF43866	Multi-period finds		Metal-detecting between 2003 and 2016 recovered Iron Age, Roman, medieval and post-medieval coins and post-medieval jetton, as well as Late Bronze Age and Late Iron Age to post-medieval metal objects. The metal finds include a Late Bronze Age tanged chisel; a Late Iron Age brooch; Roman brooches and a	Not displayed		Late Bronze Age to 19th Century

		bracelet fragment; an Early Saxon girdle hanger and belt mount; an Early/Middle Saxon ansate brooch; Late Saxon harness fittings; medieval to post-medieval dress accessories; medieval writing leads, tweezers, a padlock, an end cap from a scale-tang knife, a rivet, a rotary key, an ampulla and a seal matrix; a medieval/post-medieval bell, cauldron fragment, ring, scabbard chape, and thimble and a post-medieval jetton, harness mount, hinge and a weight.			
MNF56303	Multi-period finds	Metal detecting in 2007 and 2016 recovered Roman, medieval and post-medieval coins (including a pierced Roman coin); medieval and post-medieval jettons, a post-medieval token and a range of other metal objects. The metal finds include Roman brooches, copper alloy beads and silver, harness mount, figurine and copper alloy finger rings; a Middle-Late Saxon brooch and strap-end; medieval dress accessories and probable casket mount; a medieval/post-medieval copper alloy dish and brooch; a post-medieval buckle and lead cloth seals and an undatable copper alloy ingot.	TF 77 13		Roman to 19th Century
MNF59089	Mutli-period findspot	In 2010 metal detecting recovered metal objects dating from the Iron Age to post-medieval period including an Iron Age sword scabbard chape, Late Saxon finger-ring and medieval brooch, buckle and strap-ends.	TF 80 14		Early Iron Age to 19th Century

MNF60161	Three ring ditches, probably the remains of Bronze Age barrows	Aerial photographs show three ring ditches. These are likely to be the remains of Bronze Age barrows.	TF 7721 1320		Bronze Age
MNF61323	Medieval pottery sherd	A sherd of medieval pottery was recovered as a stray find in 2010.	TF 81 14		Medieval
MNF64084	Roman, Early Saxon, Late Saxon and medieval finds	Metal-detecting in 2012 and 2014 recovered Late Saxon/medieval and medieval pottery; Roman and medieval coins and Roman, Early Saxon, Late Saxon and medieval metal objects. The metal finds include a Roman copper alloy hair pin, plate brooch and strap-mounted terret of unusual form; a Early Saxon small-long brooch; Late Saxon brooches and a medieval lead weight, strap-end, buckle and bar mount.	TF 82 11		Roman to Medieval
MNF64453	Multi-period finds	Metal-detecting in 2010 recovered Late Iron Age, Roman and medieval coins; post-medieval jettons and Roman, Roman/Early Saxon, Late Saxon, medieval, post-medieval and undatable metal objects. The metal finds include Roman brooches, a finger-ring, the shank of a hair pin, a nail cleaner and a military scabbard slide; part of a Roman/Early Saxon rectangular military buckle plate; a Late Saxon strap-end and bridle bit link; a medieval pilgrim badge and part of a mirror case; a post-medieval buckle frame and gilt harness mount and an undatable casting jet.	TF 76 12		Late Iron Age to 19th Century

MNF64886	Mesolithic and later worked flints, Bronze Age barrow and Saxon inhumation cemetery	<p>One of a group of five ring-ditches (NHER 11971) first identified on aerial photographs taken in 1933. Fully excavated in 1987- 88, prior to aggregate extraction. This work confirmed the presence of a substantial ring-ditch that was almost certainly the levelled remains of a Bronze Age barrow. This barrow was found to have been focus of a Saxon period cemetery, with over 100 inhumation burials discovered; the majority of which had been dug into the fills of the ring-ditch. Dating evidence for the barrow itself was sparse and two pits (neither of which contained evidence of a burial) were the only features identified within the ring-ditch. Apart from a small number of Beaker pottery sherds, prehistoric finds were largely limited to an assemblage of worked flint, the majority of which is likely to relate to earlier, Mesolithic and Neolithic activity in the vicinity. Although it is possible that two of the deeper and less well-preserved burials within the ring-ditch were prehistoric it was clear that the majority related to a much later phase of activity. Many of the bodies appeared to have been placed in these shallow graves with little ceremony and no deliberately placed grave goods were found. There was also evidence for decapitation and bound limbs. Unfortunately the dating of this unusual cemetery was not entirely clear. Although few finds could be directly associated with individual burials, a small number of Early Saxon objects were recovered from the ring-ditch and one burial was radiocarbon dated to this period. The other radiocarbon determination obtained did however suggest that at least one of the burials</p>	TF 8031 1472		Lower Palaeolithic to Medieval
----------	---	--	-----------------	--	--------------------------------

		was of Late Saxon date. It therefore appears that the site was used as a burial ground for a considerable time. Although Early Saxon burials are often encountered at barrow sites, the unusual nature of this cemetery suggests that many of the inhumations may in fact be of later Saxon date. It is possible that these were the remains of executed criminals or others who for some reason were denied more formal Christian burial elsewhere.			
MNF65819	Roman and Late Saxon to post-medieval finds	Metal-detecting between 2013 and 2023 recovered Late Saxon and medieval pottery sherds; Roman and medieval coins; medieval jettons and a number of other, Roman and medieval to post-medieval metal objects. These metal finds include a Roman brooch; a possible Roman staff terminal and pendant; medieval to post-medieval dress accessories; a medieval harness pendant, repair patch from copper alloy vessel and lead spindle whorl and a post-medieval crotal bell and silver stud or mount.	Not displayed		Roman to 19th Century
MNF66013	Late Bronze Age/Early Iron Age socketed gouge	Metal-detecting in 2013/2014 recovered a Late Bronze Age/Early Iron Age socketed gouge.	TF 78 11		Late Bronze Age to Early Iron Age
MNF66046	Medieval to post-medieval finds	Metal-detecting in 2014 recovered medieval pottery as well as a medieval buckle and harness pendant and a medieval/post-medieval staple	TF 82 14		Medieval to 19th Century

MNF66093	Bronze Age, Roman and Middle/Late Saxon to post-medieval finds	Metal-detecting between 2014 and 2022 recovered Roman and medieval pottery sherds; Roman imbrex and flue tile fragments; Roman and medieval coins and a range of other, Bronze Age to post-medieval metal objects. These metal finds include a potentially Bronze Age blade fragment; Middle/Late Bronze Age socketed spearhead and socketed axehead fragments; a Middle Iron Age brooch; a Late Iron Age/Roman brooch; a Roman brooch, finger ring, phallic pendant and copper alloy hairpin; a Middle/Late Saxon buckle and hooked tag; a Late Saxon to post-medieval lead spindle whorl; medieval to post-medieval dress accessories; a medieval harness mount, casket key and cauldron handle loop; a post-medieval mount and a late post-medieval/modern seed drill scoop.	Not displayed		Early Bronze Age to 19th Century
MNF66565	Late Bronze Age and Roman to post-medieval finds	Metal-detecting between 2014 and 2022 recovered Roman, medieval and post-medieval coins and a number of other metal objects, including a Middle/Late Bronze Age spearhead fragment; Late Bronze Age socketed axeheads, a dagger/rapier blade fragment and copper alloy awl; a Roman brooch and mount; a Late Saxon hooked tag and bridle bit/harness fitting; a medieval buckle, zoomorphic annular brooch, mount and thimble; a medieval/post-medieval copper alloy vessel fragment and a post-medieval tap fragment.	TF 82 13		Middle Bronze Age to 19th Century

MNF66692	Undated, Late Saxon and medieval finds	Metal-detecting in 2014 recovered medieval pottery sherds as well as undated casting waste, a Late Saxon bit link and medieval strap fittings and buckles.	TF 83 11		Late Saxon to Medieval
MNF67060	Bronze Age, Late Iron Age to Roman and medieval to post-medieval finds	Metal-detecting between 2015 and 2023 recovered, Late Iron Age, Roman and medieval coins and a number of other metal objects, including Late Bronze Age socketed axehead and socketed spearhead fragments; a copper alloy possible Bronze Age blade fragment; a Late Iron Age/Roman brooch and toggle; a Roman brooch; medieval to post-medieval dress accessories; a medieval/post-medieval book clasp/fitting and a post-medieval crotal bell and lead alloy handle from tobacco box/jar.	TF 82 13		Early Bronze Age to 19th Century
MNF66851	Roman and medieval to post-medieval finds	Metal-detecting between 2014 and 2022 recovered medieval and post-medieval pottery sherds; Roman and medieval coins and a number of other, undated and Roman to post-medieval metal objects. These metal finds include an undated copper alloy ring; Roman brooches; an Early/Middle Saxon gilt mount; a Late Saxon mount; medieval buckles, an annular brooch and a button and a post-medieval blunt-hooked clasp.	TF 82 12		Roman to 19th Century
MNF66889	Possible Early Saxon cemetery, Late Iron Age, Roman to Early Saxon, and medieval to post-medieval finds	Metal-detecting between 2014 and 2023 recovered a Roman pottery sherd; Late Iron Age, Roman, medieval and postmedieval coins and a range of other, undated and Roman to post-medieval metal objects. These metal finds include an undated copper alloy ring, unusual disc pendant and unidentified object; Roman brooches, hair pin and copper alloy	Not displayed		Late Iron Age to 19th Century

		linch pin; a Roman/Early Saxon brooch; numerous Early Saxon brooches and a vessel fragment; a Middle/Late Saxon silver wire suspension ring; medieval to post-medieval dress accessories; a medieval/post-medieval weight and vessel fragment and a post-medieval button, part of a toy watch and lead cloth seal. The amount of Early Saxon material recovered from this area suggests it may be the site of a cemetery.			
MNF68210	Multi-period finds	Metal-detecting in 2015 and 2022 recovered Roman and post-medieval pottery sherds; a medieval roof tile fragment; Late Iron Age, Roman, Late Saxon and post-medieval coins; a post-medieval token and a number of other, Middle Bronze Age to post-medieval metal objects. These metal finds include an undatable piece of silver metal-working debris; a Middle Bronze Age rapier blade fragment; Roman brooches, bracelet fragments, a finger ring and key; Early Saxon copper alloy and silver brooches; a medieval buckle, strap fitting and mount; a medieval/post-medieval button and a post-medieval harness mount and lead cloth seal.	Not displayed		Middle Bronze Age to 19th Century
MNF69221	Post-medieval finds	Metal-detecting in 2016 recovered a post-medieval cloth seal, harness mount and harness fitting.	TF 81 09		Post Medieval
MNF69603	Roman and medieval to post-medieval pottery sherds	Roman, medieval, medieval/post-medieval and post-medieval pottery sherds were found whilst gardening between 2001 and 2006	TF 81 14		Roman to 19th Century

MNF69676	Possible site of Early Saxon inhumation cemetery	Metal-detecting at this location in 2017 recovered a notable group of Early Saxon finds, including brooch fragments, a strap fitting, wrist clasp, copper alloy rings and the copper alloy handle from a stave-built bucket. The discovery of these objects in what appears to have been a relatively small area suggests this may be the site of an Early Saxon inhumation cemetery. Subsequent metal-detecting in 2022 recovered Late Saxon and medieval coins.	Not displayed		Early Saxon to Medieval
MNF74166	Neolithic/Bronze Age flint flakes.	In 1999 two Neolithic/Bronze Age flint flakes were found at this location.	TF 81 14		Early Neolithic to Late Bronze Age
MNF75182	Cropmarks of ring-ditch of probable Bronze Age date and second possible ring-ditch	A ring-ditch of probable Bronze Age date is visible as a cropmark on an aerial photograph taken in 1976. A second possible ring-ditch has also been noted approximately 90m to the south-east, although this is visible only as a fairly vague soil mark. These features were previously recorded under NHER 3953.	TF 7891 1454		Prehistoric
MNF75282	Bronze Age, Roman and Middle/Late Saxon to post-medieval finds	Metal-detecting at this location in 2020 and 2022 recovered Roman, medieval and post-medieval coins and a number of other metal objects, including a Middle/Late Bronze Age socketed spearhead fragment; a Late Bronze Age sword hilt and copper alloy awl; a Roman scabbard chape, possible furniture fitting and lead steelyard weight; a Middle/Late Saxon strap end with niello and silver wire components; a	TF 82 13		Middle Bronze Age to 19th Century

		medieval lead seal matrix; a medieval/post-medieval buckle and a post-medieval buckle and button.			
MNF77442	Prehistoric, post-medieval and undated remains	A geophysical survey of this site in 2022 identified a cluster of potentially archaeologically-significant linear anomalies, although subsequent trial trenching in 2023 demonstrated these were all of probable natural origin. This work revealed some limited evidence for prehistoric activity in the western half of the site, although the ditches and discrete features uncovered in this area were mostly undated. Three ditches of post-medieval date were the only remains present in the eastern half of the site.	TF 8171 1005		Lower Palaeolithic to Late 20th Century
MNF13639	Bronze Age and prehistoric axehammer and flint scapers	In 1978 a Bronze Age perforated stone axe-hammer and a number of flint scrapers were recovered from this area.	TF 8182 1017		Prehistoric
MNF14839	Prehistoric pot boiler flints	In 1978 a number of prehistoric pot boiler flints were recovered from under turf on the surface of this site.	TF 818 102		Prehistoric
MNF15722	Bronze Age metal find	A Bronze Age socketed copper alloy axehead was found on the surface in 1976.	TF 8122 1370		Bronze Age
MNF15349	Two Neolithic flint scrapers	In 1979 two Neolithic flint scrapers were recovered from this site, on the route of the Swaffham bypass road.	TF 8130 0991		Neolithic
MNF17920	Mesolithic or Early Neolithic flint blade	A small Mesolithic or Early Neolithic flint blade was found by the side of a road here in about 1981.	TF 8098 1437		Early Mesolithic

					to Early Neolithic
MNF17688	Mesolithic microlith	A Mesolithic flint microlith is recorded as being found at this spot.	TF 8155 1452		Mesolithic
MNF17689	Medieval metal find	A medieval coin of King John is recorded as having been found before 1974.	TF 8009 1268		Medieval
MNF17690	Roman metal find	A Roman copper alloy bracelet was found in a field in 1965.	TF 8084 1165		Roman
MNF22703	Mesolithic flint blade	A small Mesolithic flint blade was found on a stripped surface here in 1986.	TF 8053 1459		Mesolithic
MNF32596	Possible undated well or natural feature	In 1997 arable work on this site exposed a hole of some 8m depth, growing from 1m diameter at the surface to 2m at the bottom. It is possible that this feature may have been a well, or a natural solution hole. A small number of prehistoric flints and medieval pottery sherds were recovered from the adjacent area.	TF 8069 1057		Unknown
MNF32671	World War Two pillbox and Royal Observer Corps bunker	A World War Two type 22c pillbox stands here, 200m east of the A1065. A Royal Observer Corps bunker stands nearby, and this was used during the period 1957-68. The ventilation shaft of the bunker has been removed but it is otherwise intact with the internal furnishings still present.	TF 8210 1119		World War Two to Late 20th Century
MNF3973	Nail of unknown date	A copper alloy nail of unknown date found in 1963.	TF 7717 1277		Unknown

MNF3956	Bronze Age flint find	An Early Bronze Age barbed and tanged flint arrowhead was found in 1934.	TF 7912 1451		Beaker
4	Medieval pottery	A fragment of medieval pottery found in 1957.	TF 7738 1354		Medieval
MNF3957	Saxon metal find	1964. Headplate and part of bow of bronze cruciform brooch ?GpII or III. Found while hoeing carrots in Spread Bush Field 102m (112 yards) from West Acre road to the west and 169m (185 yards) from hedge to the south. 1690m (1850 yards) east of Hall Farm.	TF 7901 1273		Early Saxon
MNF3986	Prehistoric burnt mound	A concentration of pot boilers was noted at some unspecified date.	TF 7985 1161		Prehistoric
MNF4107	Prehistoric flint adze	A prehistoric flint adze was reportedly found here in 1949. It is possible that was one of several Mesolithic tranchet adzes/axes that was subsequently identified in the finder's collection.	TF 8080 1158		Neolithic
MNF4108	Mesolithic tranchet axe	Prehistoric flint adze with tranchet edge, found in 1949. Almost certainly a Mesolithic tranchet axe.	TF 8070 1113		Mesolithic
MNF4115	Bronze Age metal find	A Bronze Age unlooped copper alloy palstave was found on the surface of a sugar beet field in 1970.	TF 803 134		Bronze Age
MNF4120	Roman brooch	A Roman copper alloy trumpet brooch was found in 1949.	TF 8034 1318		Roman
MNF4122	Roman or medieval pottery find	The neck of a Roman or medieval vase was found in 1934.	TF 807 140		Roman to Medieval

MNF4140	Undated spindle whorl	In 1961 a jet spindle whorl was found on the surface of newly ploughed field here. No date was assigned to this object.	TF 8130 1127		Unknown
MNF4124	Site of medieval leper hospital, Bartholomew Hills	The site of a medieval leper hospital, founded in the 12th century. Nothing remains today, although human bones are said to have been found in the area.	TF 8174 1319		Medieval
4	Medieval metal find	A medieval belt fitting was found in 1965.	TF 8187 1363		Medieval
MNF4128	Site of medieval leper hospital and church	Part of the site of a medieval leper hospital and church, probably founded in 1150 (see also NHER 4124). Possible wall foundations, tiles, mortar and flint, together with human skeletal remains, were found during road-widening works in the 1960s.	TF 8181 1304		Medieval
MNF4145	Saxon/medieval settlement of Stow, site of St Guthlac's Chapel	This area is thought to be the site of St Guthlac's Chapel and the now-deserted hamlet of Stow. A small number of human burials have been noted in this area, which is known to have had a churchyard during the medieval period. In addition twelve Saxon coins, dating from AD 710 to 750 and possibly forming a hoard, have been recovered here. Other objects include numbers of Saxon objects such as pins, pottery sherds, brooches, and strap ends, as well as Roman, medieval and post medieval objects.	Not displayed		Lower Palaeolithic to 19th Century
4	Medieval coins, pottery sherds, tile, oyster shell and animal remains	In 1959 a shortcross penny of Henry II or III, minted around 1205-1247, was recovered near to the site of St Guthlac's Chapel (NHER 4145). A number of medieval pottery sherds, floor tiles, iron slag, oyster	TF 8046 1087		Medieval

		shells, animal bones were also found. In 1987 a number of brown glazed tiles were also recovered.			
MNF4147	Roman glass find	A probably Roman blue glass bead was found in 1951.	TF 8018 1200		Roman
MNF4149	Neolithic and Bronze Age flint finds	A large Neolithic flint blade and an Early Bronze Age barbed and tanged flint arrowhead were found in 1949.	TF 8120 1199		Early Neolithic to Beaker
MNF4155	Roman pottery sherds	This is the approximate location of a number of Roman pottery sherds recovered in 1951.	TF 8093 1079		Roman
MNF4158	Site of post medieval inn, Bartholmew's Hills	The site of an inn of about 1700, apparently notorious for highwaymen.	TF 818 131		Post Medieval
MNF4159	Undated well and site of medieval market place, Bartholomew's Hills	The site of a deep well. Documentary sources refer to large fairs being held here in medieval times.	TF 8181 1324		Medieval
MNF4164	Post medieval ice-house	A post medieval ice-house in the grounds of Southacre Hall (NHER 4163).	TF 8066 1434		Post Medieval
MNF48554	Site of post medieval bridge	The brick remains of a post medieval bridge were found in 2005.	TF 81347 14660		Post Medieval
MNF49063	Late Bronze Age socketed axehead fragment	Metal detecting in 2006 recovered a fragment of a Late Bronze Age socketed axehead.	TF 79 11		Late Bronze Age

MNF56357	Late Bronze Age socketed axehead	Metal detecting during 2007 recovered a Late Bronze Age socketed axehead fragment.	TF 80 10		Late Bronze Age
MNF56557	Medieval/post medieval vessel	Fragment of medieval or post medieval cooking vessel found during metal detecting in 2008.	TF 80 10		Medieval to 19th Century
MNF63212	20th century milestone marking Fakenham 13 miles and Swaffham 3 miles	One of 9 surviving milestones along the Fakenham to Swaffham road.	TF 8178 1316		Early 20th Century to 21st Century
MNF63213	20th century milestone marking Fakenham 14 miles and Swaffham 2 miles	One of 9 surviving milestones along the Fakenham to Swaffham road.	TF 8182 1162		Early 20th Century to 21st Century
MNF63214	20th century milestone marking Fakenham 15 miles and Swaffham 1 mile	One of 9 surviving milestones along the Fakenham to Swaffham road.	TF 8193 0998		Early 20th Century to 21st Century
Norfolk HER 'Event' Records:					
ENF7691	Field Observation by A. Lawson and A. Rogerson (NAU), quarry west of Southacre Rectory,		TF 8092 1441		

	Southacre, 10 June 1982				
ENF8940	Field Visit by Quaternary Research Association, pits south-east of Bartholomew's Hills, Sporle with Palgrave, April 1986		TF 8223 1289		
ENF9127	Trial Excavation by J. J. Wymer (NAU), Bartholomew's Hills pits, Southacre, April 1986		TF 8175 1309		
ENF9500	Excavation by J. J. Wymer (NAU) and M.S.C team, land near Middleton Aggregates Pit, Southacre, 1987		TF 8031 1472		
ENF127908	Watching Brief by Cambridge Archaeological Unit at Castle Acre Priory, Castle Acre, November 2011	Maintained during installation of rabbit-proof fence, which followed the Scheduled Ancient Monument boundary. The trench for the fence was dug to a depth of between 0.2m and 0.3m using a mechanical excavator equipped with a narrow ditching bucket. Metal-detecting took place throughout the work, with both spoil and in-situ deposits scanned. Unfortunately, 200m of fencing along the eastern and south-eastern sides of the priory boundary had	TF 8137 1479		

		already been inserted and backfilled without archaeological supervision prior to the commencement of this watching brief.			
ENF131703	Watching Brief by NPS Archaeology at land off Low Road, Narford, January-March 2013	The archive associated with this work has been deposited with the Norwich Castle Museum (NWHCM :2017.186).	TF 7764 1163		
ENF143675	Watching Brief by Oxford Archaeology East on route of Castle Acre Mains Replacement Scheme, Castle Acre/Southacre/Sporle with Palgrave, April 2018		TF 8220 1420		
ENF153202	Geophysical Survey (magnetometry) by Archaeological Services WYAS at land south of A47, Swaffham, November 2022	Magnetometer survey of site of proposed commercial development. The survey was undertaken using Bartington Grad601 magnetic gradiometers, with readings taken at 0.25m intervals on zig-zag traverses 1m apart within 30m by 30m grids (giving 3600 readings within in complete grid square). Bespoke in-house software was used to process and present the data.	TF 8171 1005		
ENF153242	Trial Trenching by Pre-Construct Archaeology of land south of A47,	Evaluation of site of proposed commercial development. A total of sixteen 30m long trenches were excavated, several of which were positioned to target anomalies revealed by a preceding geophysical	TF 8172 1003		

	Swaffham, February 2023	survey (ENF153202). These trenches were opened using a 14-tonne 360-degree excavator equipped with a toothless ditching bucket and working under close archaeological supervision. Metal-detecting took place during the removal of topsoil and subsoil deposits and then throughout the excavation process, with spoil and feature scanned periodically. A small number of bulk environmental samples were taken from selected deposits.			
--	-------------------------	---	--	--	--

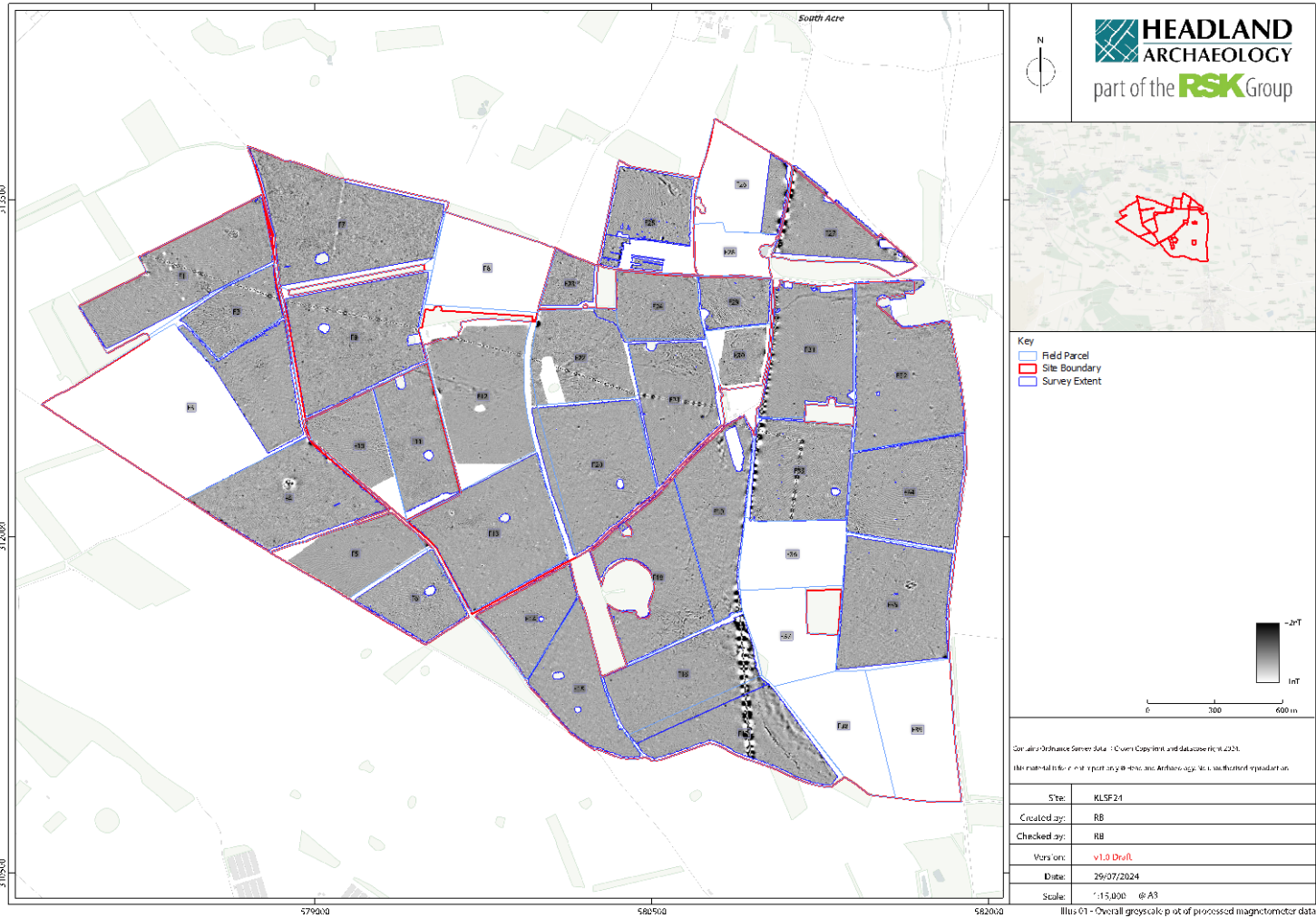


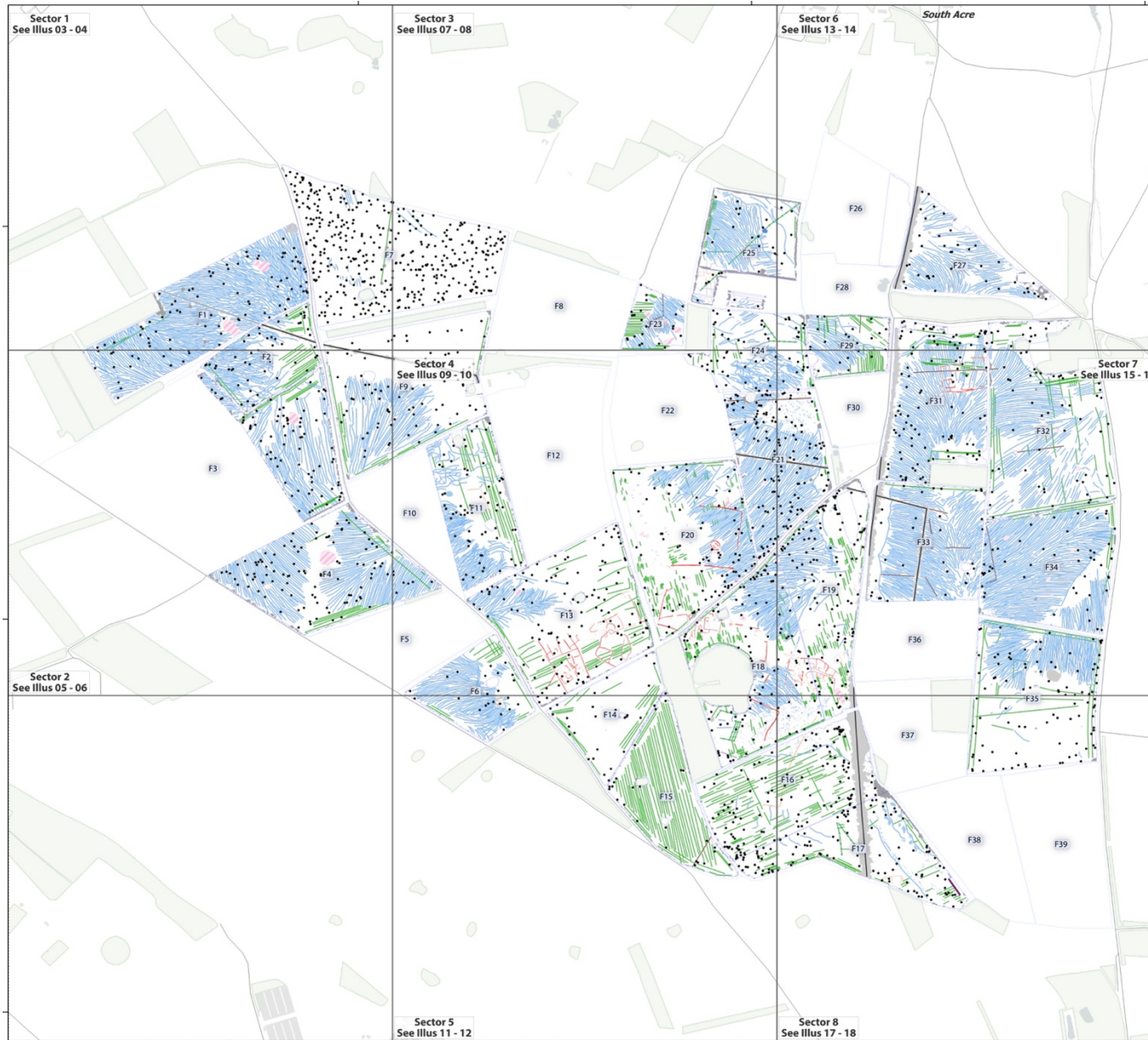
THE DROVES
SOLAR FARM

Appendix 8.3

Geophysical Survey Interim Results

1 Appendix 8.3: Geophysical Survey Interim Results







THE DROVES
SOLAR FARM